

Modular 3U MPO-LC Patch Panel

Rack Mount ODU-L15

Overview

The LongXing High Density fiber patch panels are designed to accommodate high density applications in Data Centers and Telecommunication environments. This factory pre-populated and tested Fiber Patch Panel saves on-site installation time and increase reliability. The design of enclosure allows for easy connection to the LC adapters using LongXing' s multi-fiber optical patch cords (sold separately) and is mountable in a standard 19in or 23in rack or cabinet frame. Maximum expandable to 288 LC ports.

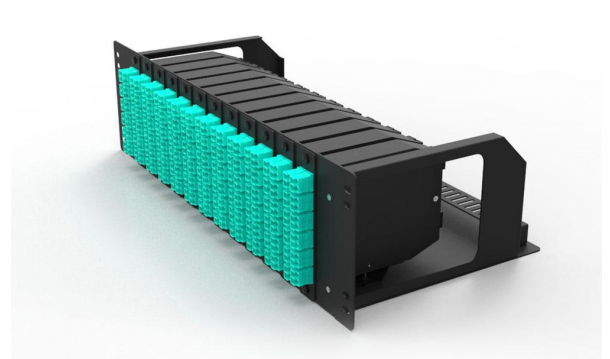
The rack mount MTP/MPO patch panel ODU-L15 is a high density, modular (LX-J MTP/MPO Cassette or LX-K Adapter Plate), fullyloaded LC Flat 3U fiber patch panel. It is a complete Fiber Adapter Panel based turnkey solution with a total of max 288 LC fibers (144 Duplex LC) in 3U. This modular fiber patch panel is factory preloaded with Qty. 12 12/24 fiber LC Duplex LX-J MTP/MPO Cassettes (LX-K Adapter Plates) or Qty. 8 36 fiber LC Duplex LX-J MTP/MPO Cassettes for quick implementations in 10/100G networks.

Features

- UP to 288 Fiber LC Ports in 3U
- Qty. 12 LX-J MTP/MPO Cassettes with 12/24 LC
- Qty. 8 LX-J MTP/MPO Cassettes with 36 LC
- Qty. 12 LX-KMTP/MPO Adapter Plates with 12/24 LC
- Flexibility to Mix Adapter Plates with Cassettes in Patch Panel
- Available in SM, OM1, OM2, OM3 and OM4 fiber grades
- Flat Front Panel for Optimal Cable Routing
- Removable Top for Easier Fiber Cable Management
- Easily Accessible MPO/MTP Ports for Connection to Trunk Cable
- Compliant IEC-61754-7, EIA/TIA-604-5 & RoHS
- Factory terminated and tested
- MPO/MTP components feature superior optical and mechanical properties

Applications

- Data communication applications
- Data Center infrastructure
- Storage Area Network - Fiber Channel
- Emerging 40 and 100Gbps protocols compatible



LongXing Telecom



Anju Road, Beilun District, Ningbo, China



info@lxtelecom.com



www.lxtelecom.com



LongXing Telecom



LongXingTelecom



+86 574 87908988



+86 574 87908188

Ver: 160616

LONGXING

Structured Cabling Solutions

ODU-L15 Dimensions and Capability

Height	Dimensions(W*D*H)	Quantity of Cassette/Plate				Max Capacity
		LX-J-1 Cassette	LX-J-2 Cassette	LX-J-3 Cassette	LX-K Plate	
3U	485mm*230mm*132mm	12	12	8	12	288

LX-J Cassette Technical Specifications

SPECIFICATION	LX-J-1	LX-J-2	LX-J-3
Total Fiber Count	12	24	36
Front Adapter Type	LC Duplex	LC Duplex	LC Duplex
Front Port Count	6	12	18
Rear Adapter Type	MTP/MPO	MTP/MPO	MTP/MPO
Rear Port Count	1	2	3

LX-K Plate Technical Specifications

SPECIFICATION	LX-K-1	LX-K-2
Total Fiber Count	12	24
Front Adapter Type	LC Duplex	LC Duplex
Front Port Count	6	12

Operation Conditions

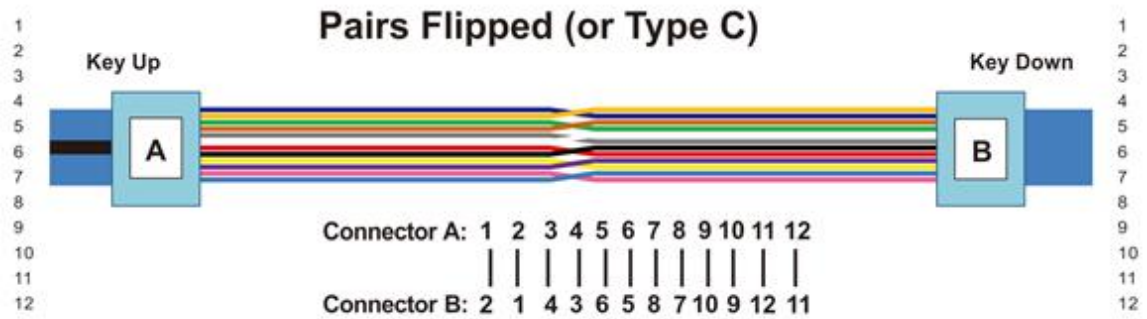
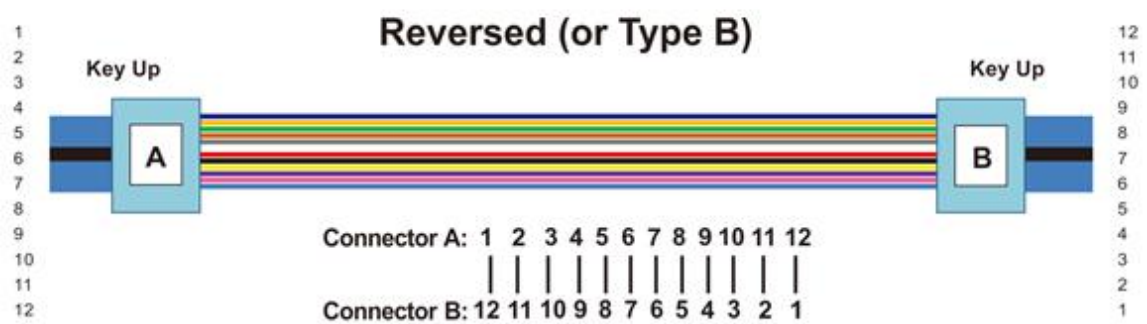
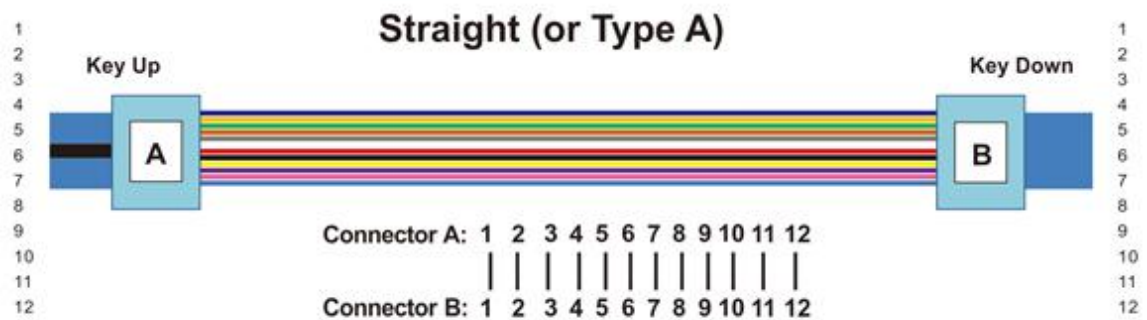
Operating Temperature	-20℃ -- +60℃
Storage Temperature	-40℃ -- +70℃
Humidity	90% at 30℃
Air Pressure	70kPa - 106kPa

Shipping Information

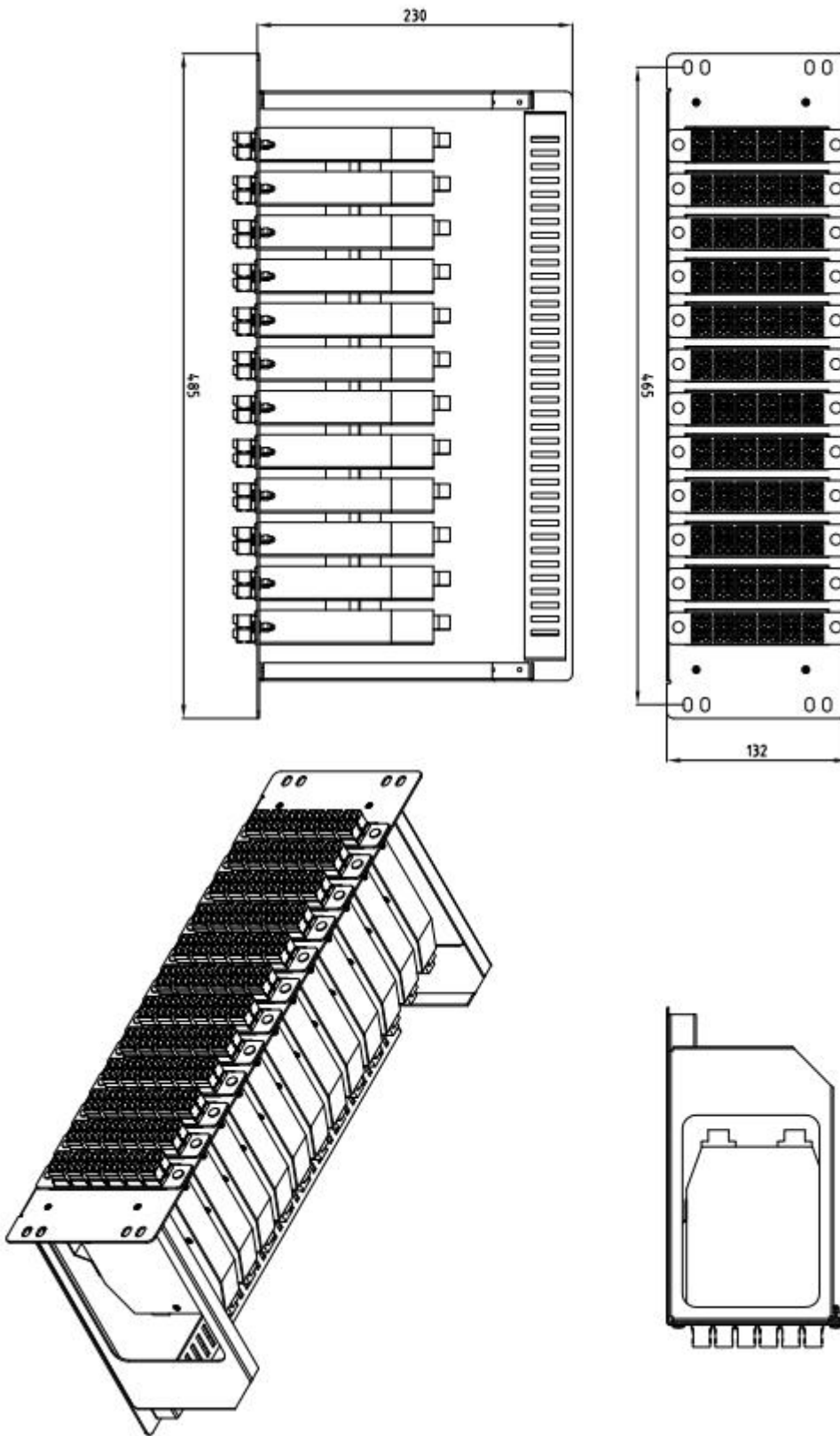
Package Contents	Patch panel, 1 unit
Package Dimensions(W*H*D)	It depends on the dimensions of the product
Material	Carton box
Weight	It depends on the dimensions of the product
Lead Time	10-15 working days normally



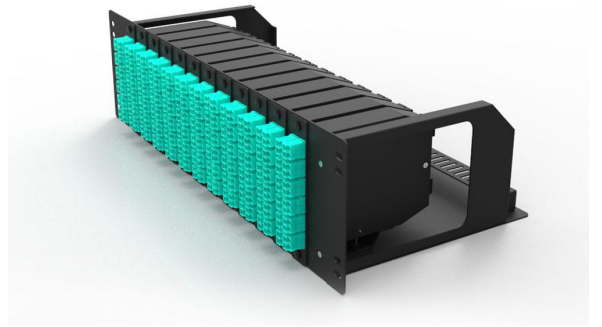
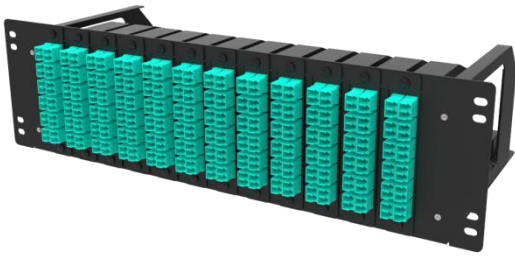
Pre-terminated MTP Technology-Polarity



Technical Drawings



Part Details



LongXing Telecom



Anju Road, Beilun District, Ningbo, China



info@lxtelecom.com



www.lxtelecom.com



LongXing Telecom



LongXingTelecom



+86 574 87908988



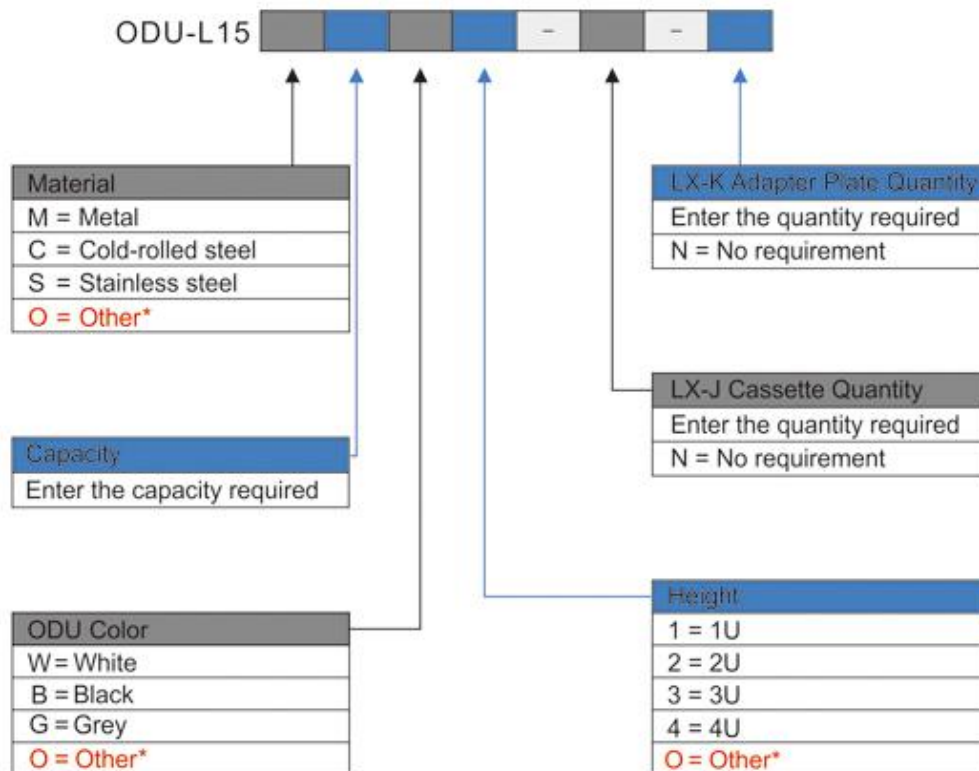
+86 574 87908188

Ver: 160616

LONGXING

Structured Cabling Solutions

Catalog Number



Ordering Example:

ODU-L15C288B3-12-N Cold-rolled Steel, 288 Cores, Black ODU, 3U, 12 LX-J Cassettes, No LX-K Adapter Plate.

Note: *If the required type of any item is not on the relevant list, please use "O", "OO" or "OOO" as the red cells indicate, and kindly state the required type in the description of PO.



LongXing Telecom



Anju Road, Beilun District, Ningbo, China



info@lxtelecom.com



www.lxtelecom.com



LongXing Telecom



LongXingTelecom



+86 574 87908988



+86 574 87908188

Ver: 160616

LONGXING

Structured Cabling Solutions