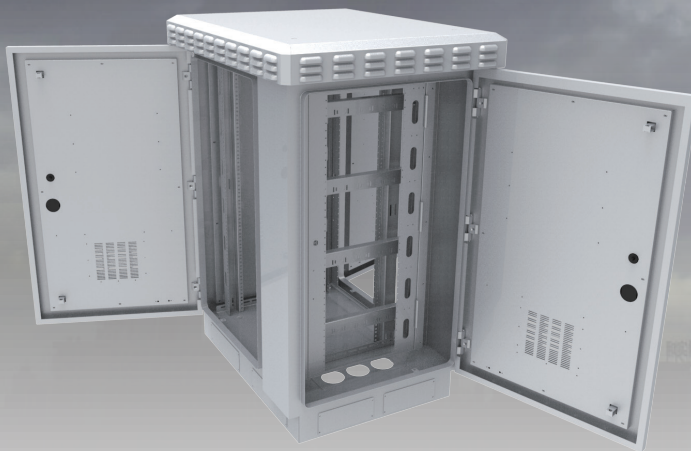


The Multiple Protection

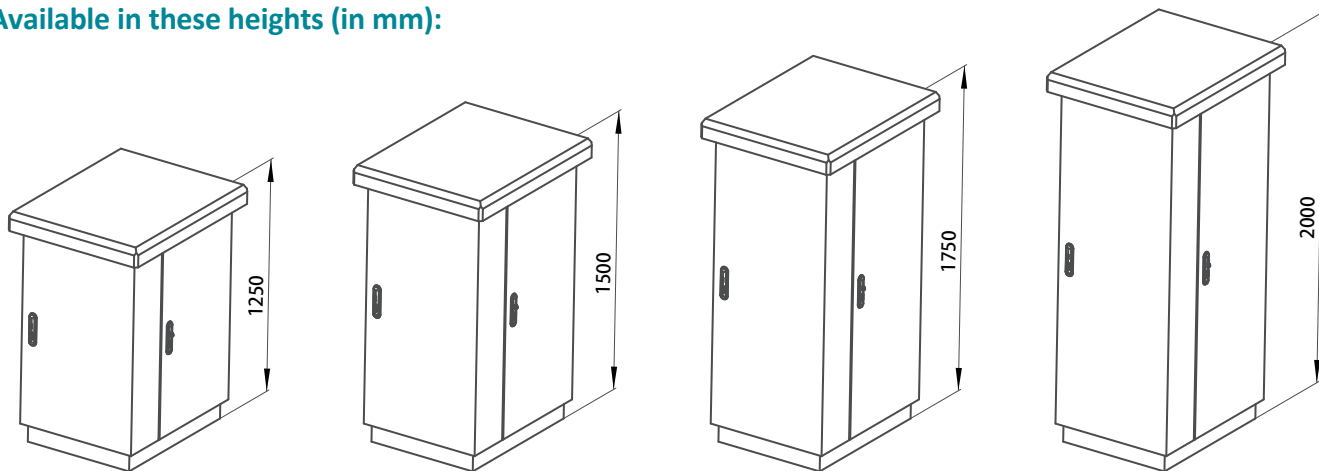
- Three-door design for maximum function varieties
- Side compartment for fiber, MDF/VDF modules or embedded climate control equipment
- Fans can be added on the top cover for extra ventilation



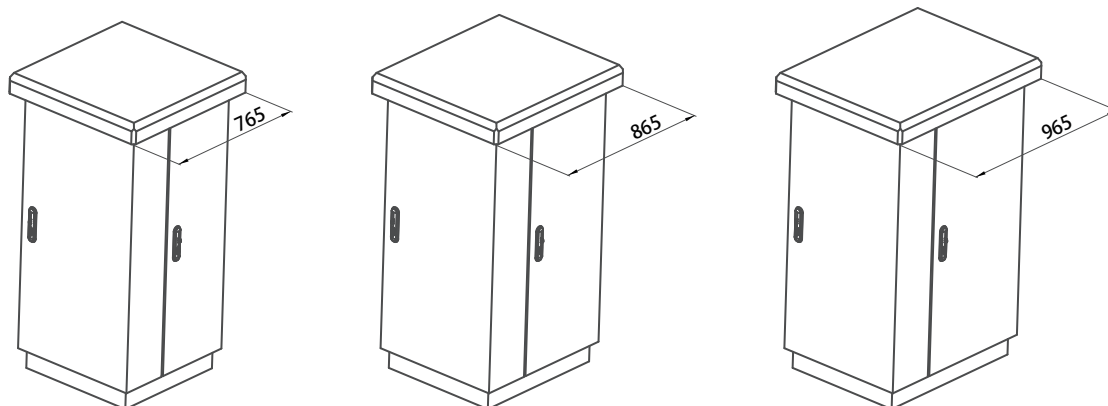
The Multiple Protection

Construction

Available in these heights (in mm):



Available in these depths (in mm):



CUSTOMIZABLE

Other Options



Power. 110-240V



Laptop Tray



Door Alarm



Optical Splitter



Power Supply (Breaker, Rectifier, Monitor)



L Rail Set



Water Alarm



Splice Tray



Ground bar kit. 10-position



Interior Light



Smoke Alarm



Distribution Module



19" or 23" Mounting Panel



Heater



Dynamic Environment Monitoring Systems



19" or 23" Relay Racks



PDU



Fan



Generator Plug & Interlock



Mounting Base



Battery: AGM VRLA Batteries



Air Conditioner



Door Latch Tool



Battery Storage



Heat Exchanger



Solar shield roof