

# Rack Mount Fiber Enclosure

Loaded with OSPM PLC Splitter (LGX Box)

## Overview

LongXing's Rack Mount Fiber Enclosure is an integrated unit for fiber management with a protection function, to hold OSPM PLC Splitter (LGX Box). This high-density patch panel is constructed of light weight, yet durable, rolled steel. OSPM PLC Splitter (LGX Box) must be ordered separately. The splitters are available loaded with either LC or SC type adapters.

OSPM PLC Splitter (LGX Box), also known as LGX PLC splitter or LGX splitter. The whole body of a LGX PLC splitter is housed in a strong PLASTIC box which can be used alone or be easily installed in standard fiber patch panel or fiber patch enclosure. Fiber adapters are pre-terminated on the LGX box for fast and reliable connecting with subscribers or other devices.

## Features

- Loaded with OSPM PLC Splitter (LGX Box)
- ✧ 1 U Rack Mount to hold 3 pieces of 1\*8 OSPM PLC Splitter (LGX Box)
- ✧ 2 U Rack Mount to hold 3 pieces of 1\*16 OSPM PLC Splitter (LGX Box)
- ✧ 3 U Rack Mount to hold 16 pieces of 1\*8 OSPM PLC Splitter (LGX Box)
- ✧ Customized design available upon request.
- Compact Design
- Mount to standard EIA 19 " rack rails
- Steel construction with Black Powder Coating
- Ensure signal integrity, proper cable routing, bend radius control and cable protection
- Provide higher patch field density in fewer rack units saving valuable space
- Assures flexibility and ease of network deployment and moves, adds, and changes
- Provides a complete system solution for connectivity



## Dimensions and Capability

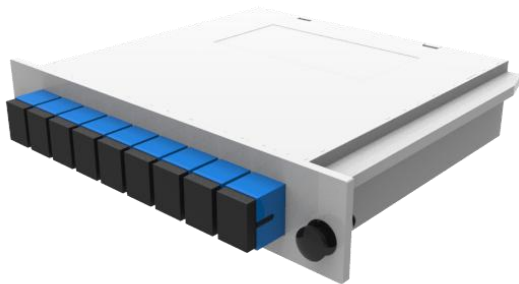
height	Depth	Width	Capacity	Quantity of Splitter
1U	200	19 "	24	Qty. 3, 1*8
2U	200	19 "	48	Qty. 3, 1*16
3U	200	19 "	96	Qty. 16, 1*8



## Shipping Information

Package Contents	Patch panel, 1 unit
Package Dimensions(W*H*D)	It depends on the dimensions of the product
Material	Carton box
Weight	It depends on the dimensions of the product
Lead Time	10-15 working days normally

## OSPM PLC Splitter (LGX Box)



Ratio: 1\*8

Dimensions: 25m\*130\*100mm

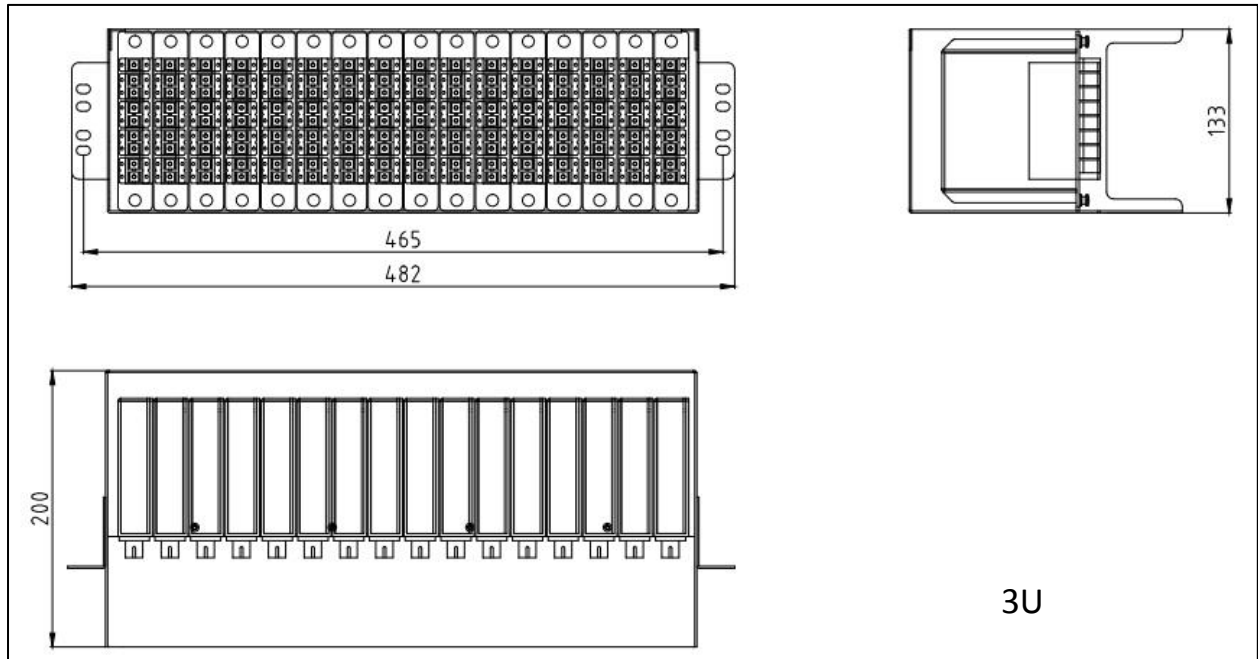
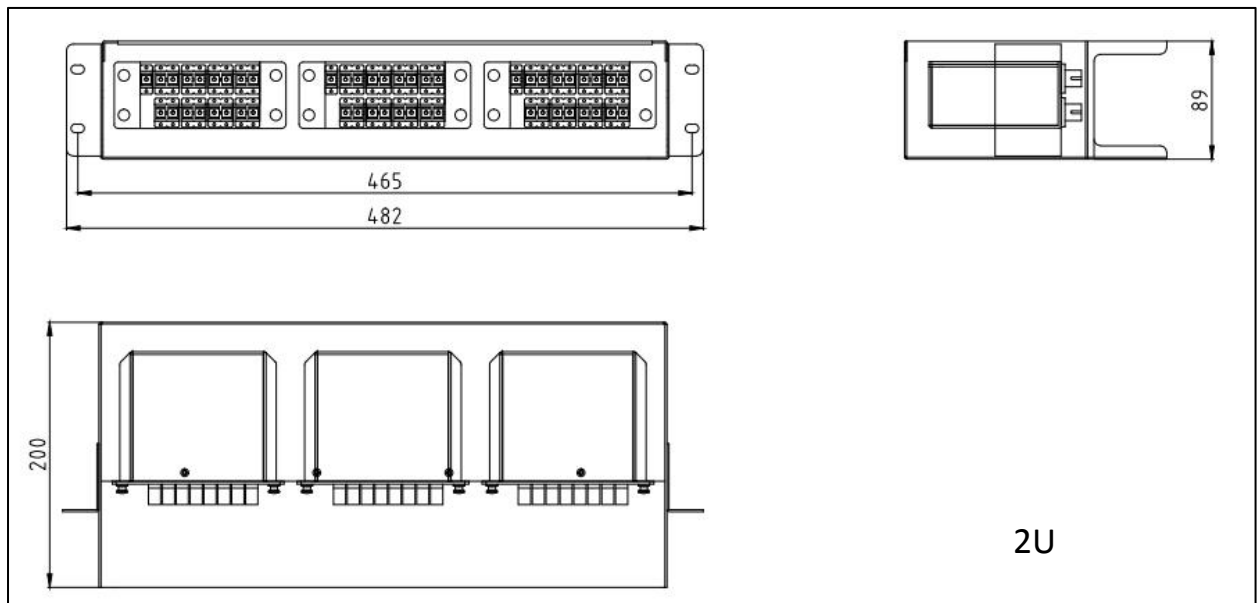
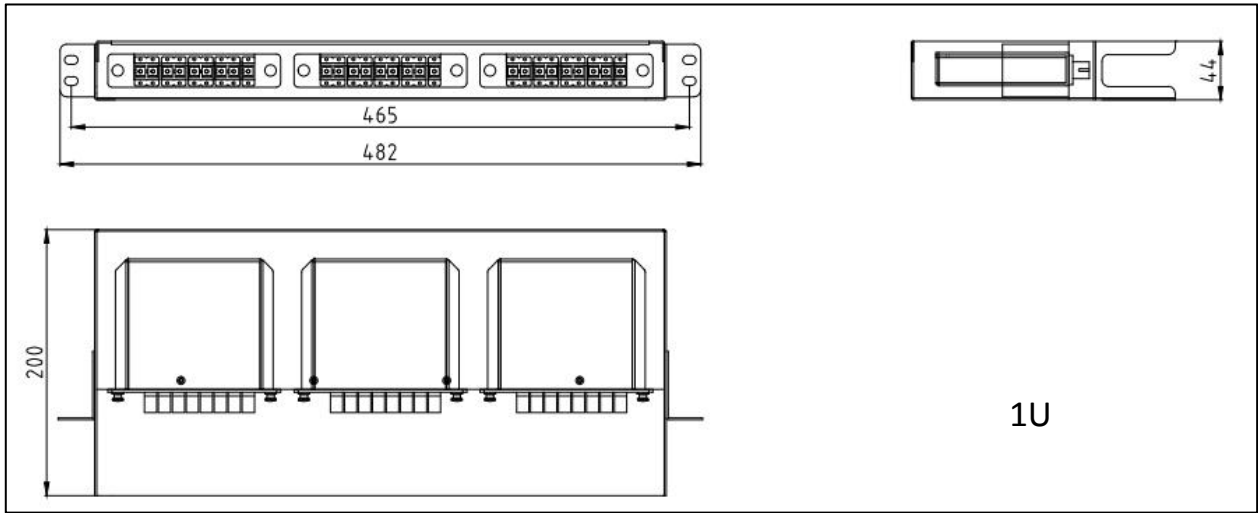


Ratio: 1\*16

Dimensions: 50\*130\*100mm



# Technical Drawings



## Part Details



LongXing Telecom  
Anju Road, Beilun District, Ningbo, China  
info@lxtelecom.com  
www.lxtelecom.com



LongXing Telecom



LongXingTelecom



+86 574 87908988

+86 574 87908188

Ver: 140220

**LONGXING**

Structured Cabling Solutions