

Fiber Optics Splice Box

GP31-2MS144A (pre GP31-2M144A)

Overview

LongXing GP31-2MS144A wall mountable outdoor splice box is very suitable for FTTx uses. It provides a high density splicing system with fiber management, saves space and ensures all the fibers and cables are well organized.

Features

- The box has functions of cable splicing and patching.
- High density up to 144 core splicing.
- Solid structure with good performance of dust-proof.
- Pleasing and neat appearance.
- Easy installations: Wall mountable.
- Lock provided on every box ensures the safety of the fibers.



Dimension and capacity

Box Type	Dimensions (W*D*H)mm	Capacity
Square Corner	600x370x120	144 cores

* Customized design available upon request.

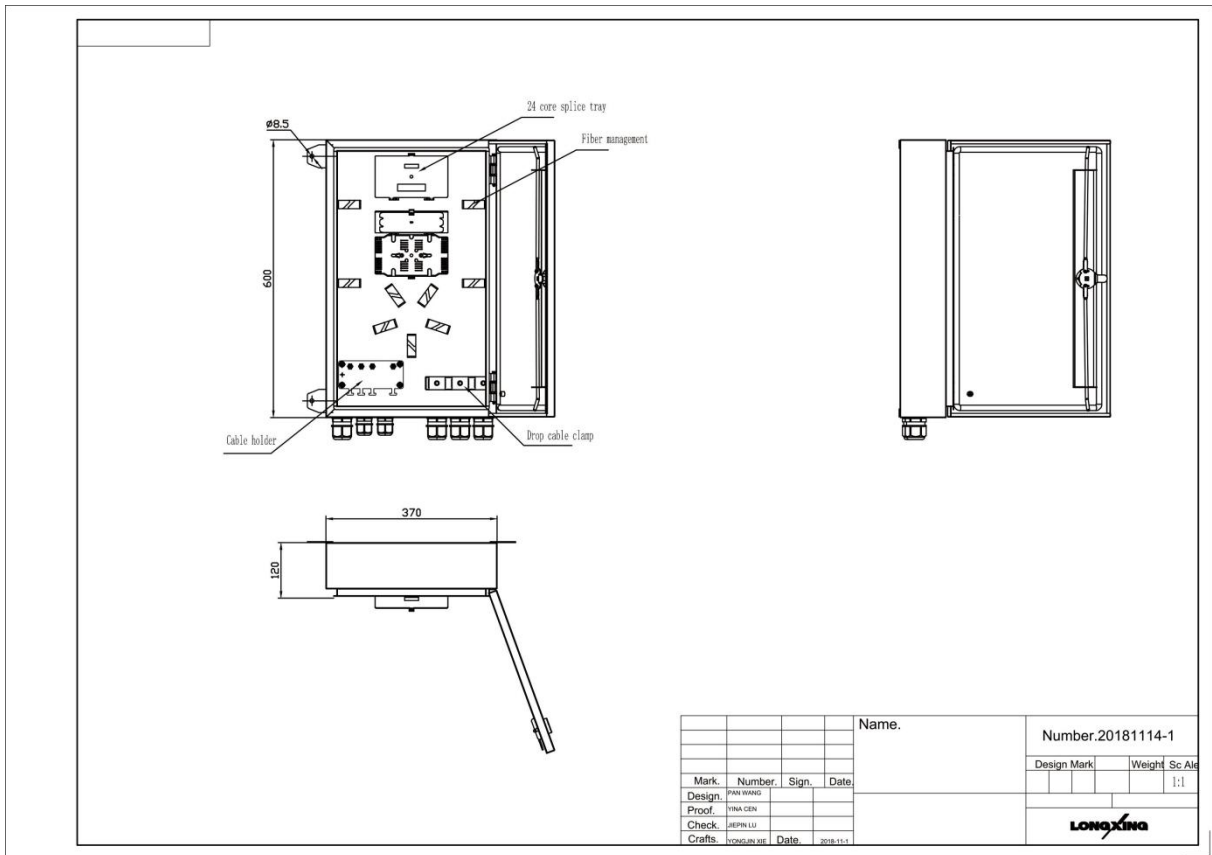
Operation Conditions

Temperature	-30°C - 75°C
Humidity	≤90%(at 30 °C)
Air Pressure	70kPa – 106kPa

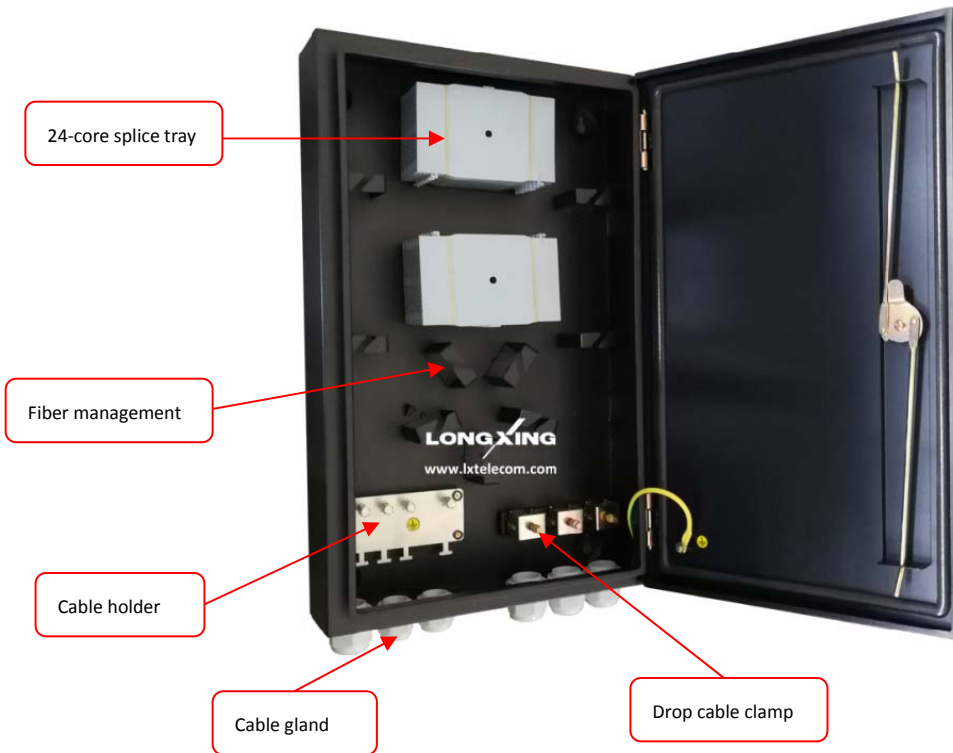
Shipping Information

Package Contents	Splice box, 1 unit
Material	Carton box
Lead Time	10-15 working days normally

Technical Drawing



Part Details



Part Details

