

# Fiber Optics Splice Box

GP31-1MS216A (pre Mini ODF GPX82-11)

## Overview

LongXing GP31-1MS216A wall mountable outdoor splice box is very suitable for FTTx uses. It provides a high density splicing system with fiber management, saves space and ensures all the fibers and cables are well organized.

## Features

- The box has functions of cable splicing and patching.
- Solid structure with the advantages of good performance of dust-proof, pleasing and neat appearance.
- High density up to 216 cores splicing.
- Two cable glands and one big cable entry on both top and bottom.
- Easy installations: Wall mountable.
- Ideal for indoor uses – cable entrances & exits located on both top and bottom.
- Lock provided on every box ensures the safety of the fibers.
- The central adapter board separates the incoming cables and the exiting fibers



## Dimensions and Capacity

Type	Dimensions (W*D*H)mm	Capacity
Splice Box	600*300*600	216

\* Customized design available upon request.

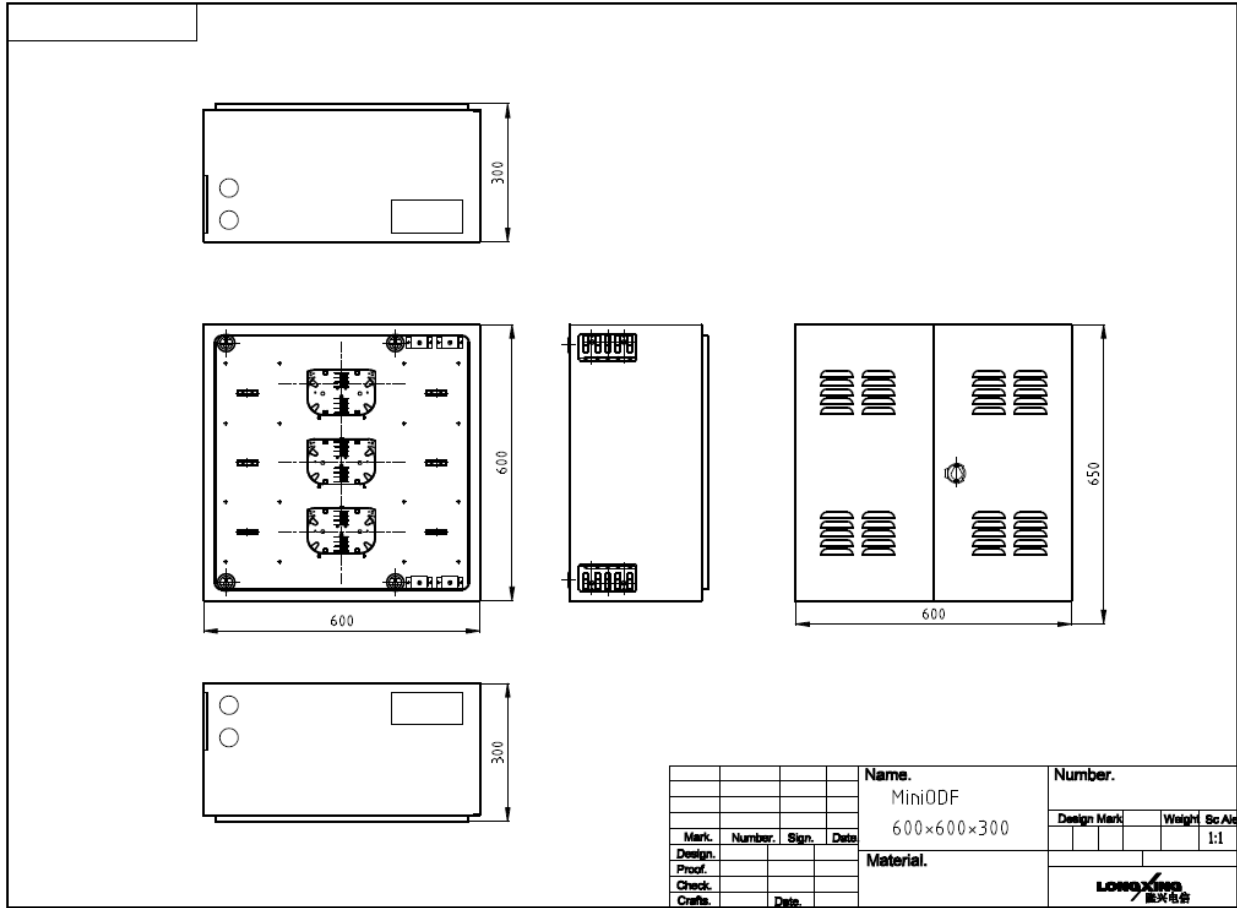
## Operation Conditions

Temperature	-30°C - 75°C
Humidity	≤90%(at 30 °C)
Air Pressure	70kPa – 106kPa

## Shipping Information

Package Contents	Mini ODF, 1 unit; Installation accessories, 1 set
Material	Carton box
Lead Time	10-15 working days normally

# Technical Drawing



# More Details

