

Fiber Optics Distribution Box

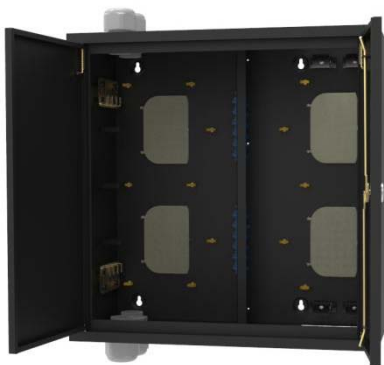
GP31-1M96A



For Cross Connect



For Cross Connect



For Shell and Core buildings



For Shell and Core buildings



Overview

LongXing fiber optics distribution box GP31-1M96A is currently being widely used for distributing outdoor optical cable in indoor conditions. It is very suitable for FTTx uses. This box offers ideal environment for fibers to be spliced and well organized under indoor environment.

Features

- The box has functions of cable termination, splicing, distribution and cross-connection.
- Solid structure with the advantages of good performance of dust-proof, pleasing and neat appearance.
- Easy installations: Wall mountable.
- Ideal for indoor uses – cable entrances & exits located on both top and bottom.
- Lock provided on every box ensures the safety of the fibers.
- The central adapter board separates the incoming cables and the exiting fibers
- Adoptable adapter types: SC, LC/Duplex

Dimensions and Capacity

Type	Dimensions (W*D*H)mm	Capacity
For Cross Connect (SC)	600*150*600	24
For Cross Connect (LC)	600*150*600	48
For Shell and Core buildings (SC)	600*300*600	48
For Shell and Core buildings (LC)	600*300*600	96

* Customized design available upon request.

Operation Conditions

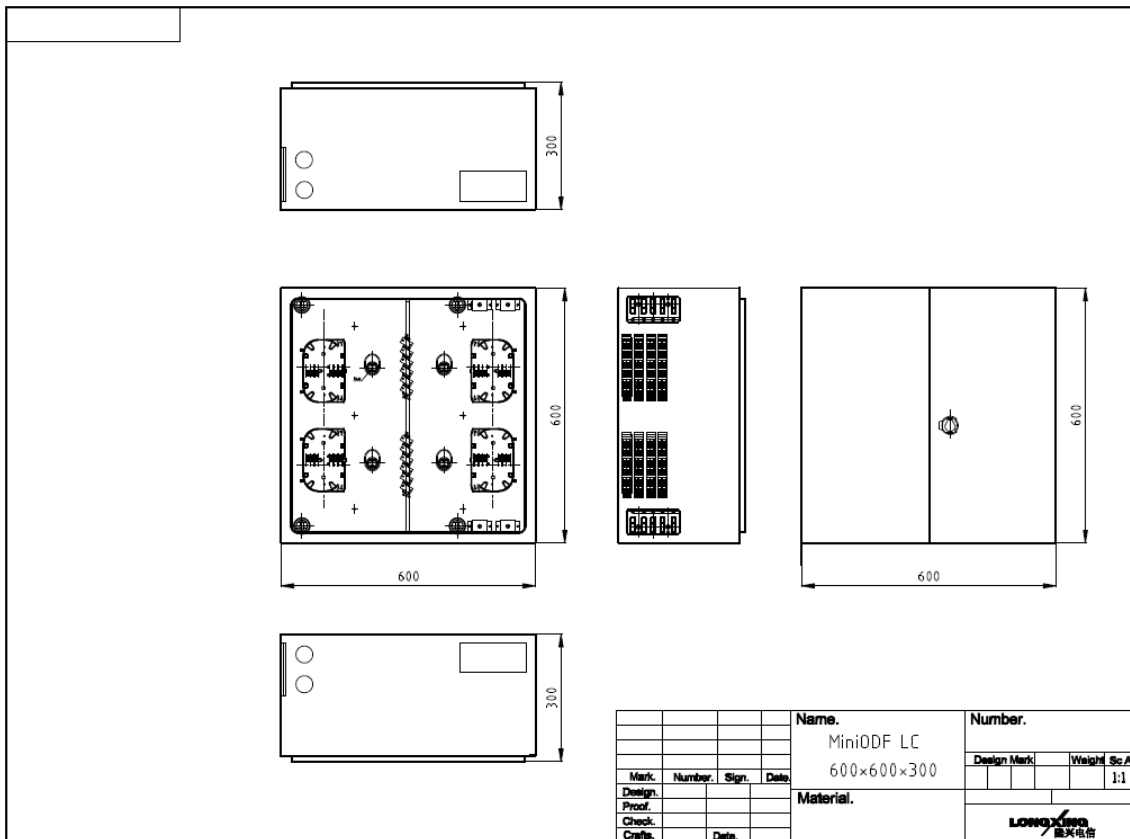
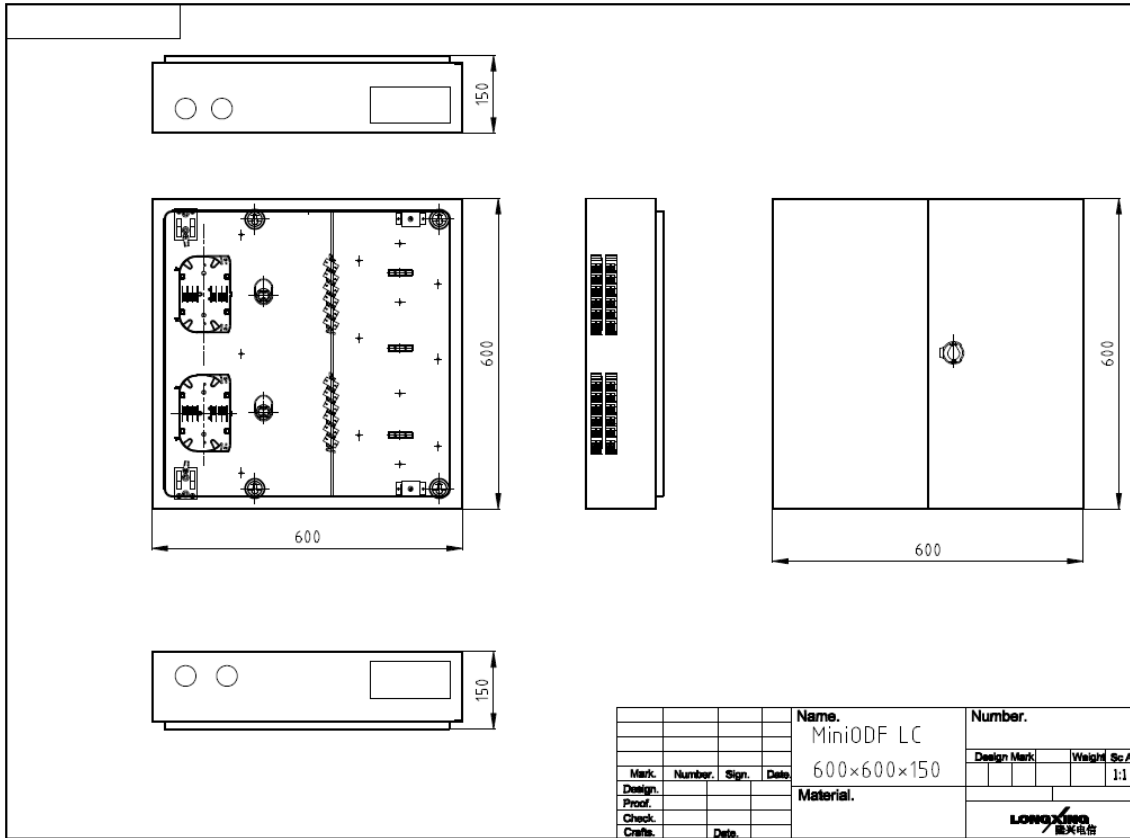
Temperature	-30°C - 75°C
Humidity	≤90%(at 30 °C)
Air Pressure	70kPa – 106kPa

Shipping Information

Package Contents	Mini ODF, 1 unit; Installation accessories, 1 set
Material	Carton box
Lead Time	10-15 working days normally



Technical Drawing



More Details

