

# Optical Fiber Distribution Frame

GPX82-10



## Dimensions and Capability

Dimensions(H*W*D)	2200mm*900mm*300mm
Material	Cold rolled steel; Powder coated
Color	RAL 7035
Weight	120 kg / empty
Maximum Port Capacity	2016 Port (Splice & Patch)
Maximum Subracks Allowed	14*3U Patch Panel (144 Ports)
Compliance	GR-449-core of Telcordia Specification

\*Customized designs are available upon request



## Overview

LongXing optical fiber distribution frame GPX82-10 provides flexible cabling access, expandable frame concept, integrated cable management and a future proof modular design with the highest termination capacity possible and superior cable management. High density side access type of patch panel is also designed to fit a variety of termination, splice, and storage applications.

## Features

- Thickness of steel: front doors and rear panel: 1.5mm, other parts: 2.0mm
- Lock at the front door
- Enhanced visual appearance
- Highly stable and rigid construction
- Standard 19" & ETSI installations
- Designed to be used together with high density side access type patch panels
- Maximum fiber density of 2016 ports (splice & patch) and superior cable management
- Special cable glands to fix the maximum number of bundle cables on the ground
- Slot type cable guide compartments to feed the modules via miniflex tubes
- No crushed or stressed fibers
- Wide range of splice, patch and cable storage options
- Bend radius protection of 35 mm throughout entire frame and all modules
- Max cable protection
- Interchangeable cassettes for various cable/tube counts and connector styles
- Accepts WDM and splitter cassettes
- Integral patch cords management



Rack Mount Patch Panel ODU-L21

## Density Info

- 14 ODU-L21 Patch Panels in 47 U Frame
- SC/LC interfaces available
- The Frames are compliant to Telcordia Specification GR-449-core

Operation Conditions	
Temperature	-5°C -- 60°C
Humidity	90% at 30°C
Air Pressure	70kPa – 106kPa

Shipping Information	
Package Contents	ODF 1 unit
Package Dimensions(W*H*D)	It depends on the dimensions of the product
Material	wooden box
Weight	It depends on the dimensions of the product
Lead Time	10-15 working days normally



## Part Details



### Incoming Cable Management

Special guiding slots ensure secure and flexible guidance of the fiber protection tubes to the splice modules.



### Miniflex Tubes

Miniflex™ Protection Tube is a flexible tube made from tough polymers to protect optical fibers or lightweight optical fiber units.



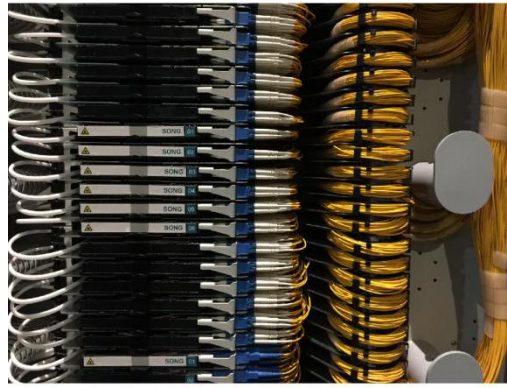
### Rack Mount Patch Panel ODU-L21

Ultimate new design with the most advanced splice & patch system and cable management





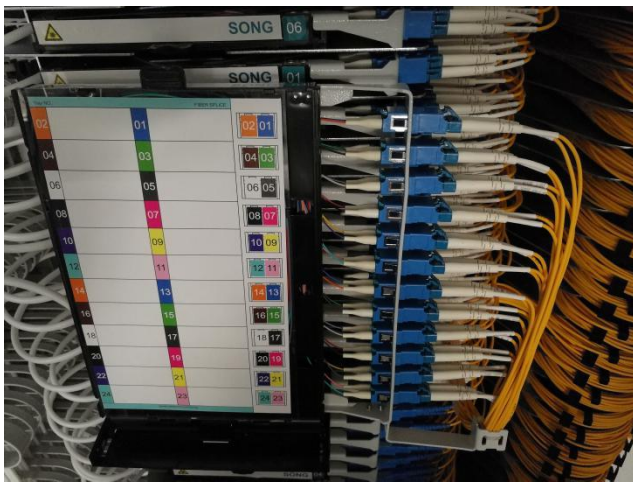
## Part Details



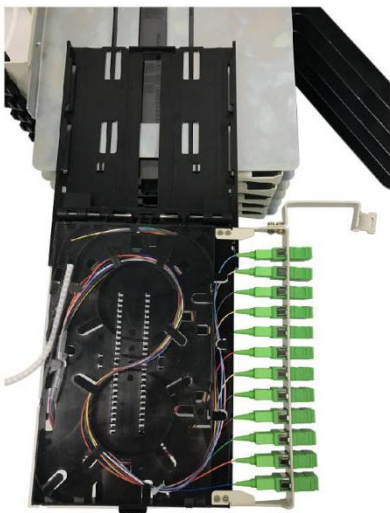
### Patch Cords Management

Patchcords are guided via special mandrels and cable guides to the excess cable storage area.

Excess cables are stored via special bend radien to ensure required bending criterias.



### Color Label for Fiber Count



### Double Sided Module System

- Storage Side
- Splice Side

Enable high density splice and patching up to 24 cores for LC duplex, 12 cores for SC adapter



## More Details

