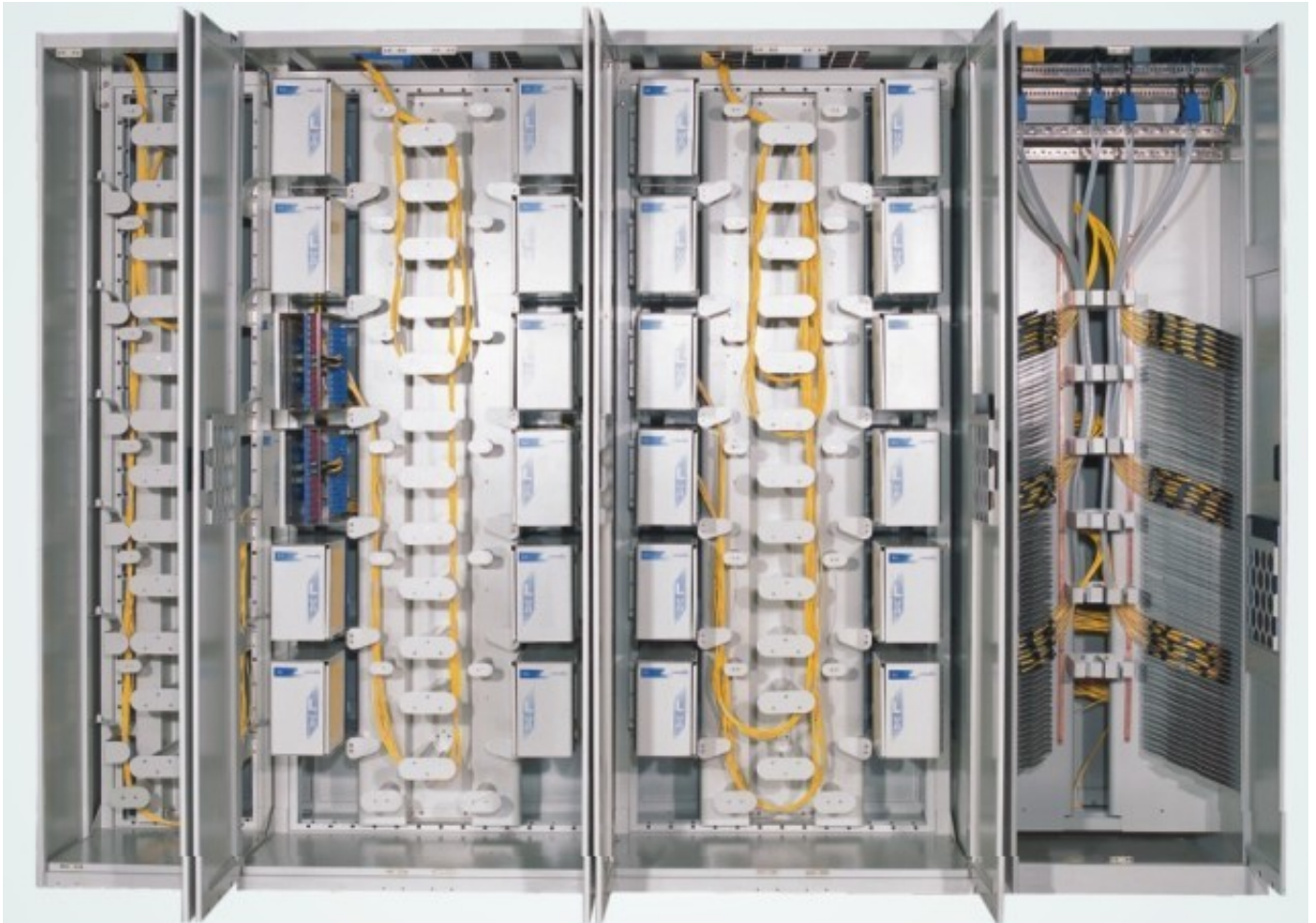


Optical Fiber Distribution Frame

GPX82-6B



Dimensions and Capability

Dimensions(H*W*D)	Description	Capacity
2200*480*700	Fiber Storage Frame	
2200*720*700	Integrated Splice Frame	12cores/tray, 144trays/frame
2200*900*700	Basic Distribution Frame	72cores/unit, 864cores(12units)/frame
2200*900*700	Expansion Distribution Frame	72cores/unit, 864cores(12units)/frame

*Customized designs are available upon request



Overview

LongXing optical fiber distribution frame GPX82-6B is made of top quality steel and deformed aluminum alloy and treated with galvanizing, oxidation and electrostatic plastic spraying, and it has the advantages of anti-corrosion, solid structure and pleasing appearance.

Features

- The combination consists of basic frame, expansion frame, integrated splice frame and fiber storage frame (custom combinations available).
- Hierarchical structure with the advantages of good performance of installation, maintenance and operational efficiency.
- This frame is suitable for large-capacity fiber optic into the client side management and business development needs.
- Modular design:
- Integrated splice frame comprises cable inlet systems (which provide strong fixing units for outdoor cables), large amount of splice tray slots (both left and right sides).
- Optical distribution frame is comprised of optical distribution module, fiber splice tray module, rear horizontal fiber support groove.
- Fiber storage frame contains fiber winding shaft and rear horizontal fiber support groove.
- The rear horizontal fiber support grooves of optical distribution frame and fiber storage frame connect directly. The rear horizontal fiber support grooves connect between distribution frame and splice frame through the eyelet on the right of splice frame.
- The distribution modules have the options of 72 cores and 96 core modules.
- At the back of each optical distribution frame, opposite to the two fiber distribution modules at left and right of frame front, a fiber support channel is equipped to facilitate fiber jumping between units, as well as the direct jumping between frames without passing frame top. Common optical distribution frame does not have such advantage.
- According to customers' needs, fiber support channel is provided for both single-layered structure and double-layered structure.
- Enough space for fiber support channel, convenient for maintenances and operations.
- According to customers' needs, optic cable inlet device is provided for both single-layered structure and double-layered structure

Optional Elements

- Hardware to fasteners, and fastening to the number of fiber needed can be offered on request.
- Elements to protect buffers depending on the number of cables needed can be offered on request.
- Accessories such as screws, nut, fasteners for raiser floor or concrete floor can be offered on request.
- Customer's logo can be printed on the upper left corner or upper right corner of the frame on request.

Operation Conditions

Temperature	-5℃ -- 60℃
Humidity	90% at 30℃
Air Pressure	70kPa – 106kPa

Shipping Information

Package Contents	ODF 1 unit
Package Dimensions(W*H*D)	It depends on the dimensions of the product
Material	wooden box
Weight	It depends on the dimensions of the product
Lead Time	10-15 working days normally



Catalog Number

GPX82-6B - 

Dimensions	
1=	2200*480*700 Fiber Storage Frame
	2200*720*700 Integrated Splice Frame
	2200*900*700 Basic Distribution Frame
	2200*900*700 Expansion Distribution frame
O=Other*	

Splice Tray Type
1 = Frisbee
2 = Direct Splice

Cable Inlet
Y = Yes
N = No

Material
C = Cold-rolled Steel
S = Stainless Steel

Protection Tubes Length
Enter the length required
N = No requirement

ODF Color
W = White
B = Black
G = Gray
O = Other*

Cable Entry
T = Top
B = Bottom
M = Both top and bottom

Patch Panel Type
1 = 72
2 = 96

Patch Panel Quantity
Enter the quantity required
N = No requirement

Ordering Example:

GPX82-6B-OCW1-4T10N2 Customized design, Cold-rolled steel, White, 72 Cores patch panel, 4 Patch panels, Top cable entry, 10m Protection tubes, No cable inlet, Direct splice.

Note : *If the required type of any item is not on the relevant list, please use "O" or "OO" as the red cells indicate, and kindly state the required type in the description of PO.

