

Modular MPO-LC Patch Panel

ODU-L19

Overview

The LongXing High Density fiber patch panels are designed to accommodate high density applications in Data Centers and Telecommunication environments. This factory pre-populated and tested Fiber Patch Panel saves on-site installation time and increase reliability. The design of enclosure allows for easy connection to the LC adapters using LongXing' s multi-fiber optical patch cords (sold separately) and is mountable in a standard 19in or 23in rack or cabinet frame. Maximum expandable to 144 LC ports.

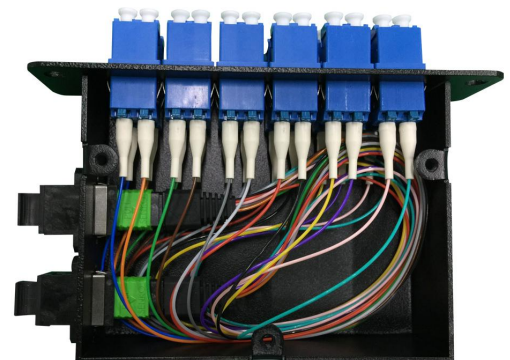
The ODU-L19 modular fiber patch panel is factory pre-loaded with **Qty. 6** LX-N series 12/24 fiber LC Duplex LX-J MTP/MPO Cassettes for quick implementations in 10/100G networks.

Features

- UP to 144Fiber LC Ports
- Qty. 6 MTP/MPO Cassettes with 12/24 LC
- Flexibility to Mix Adapter Plates with Cassettes in Patch Panel
- Available in SM, OM1, OM2, OM3 and OM4 fiber grades
- Flat Front Panel for Optimal Cable Routing
- Removable Top for Easier Fiber Cable Management
- Easily Accessible MPO/MTP Ports for Connection to Trunk Cable
- Compliant IEC-61754-7, EIA/TIA-604-5 & RoHS
- Factory terminated and tested
- MPO/MTP components feature superior optical and mechanical properties

Applications

- Data communication applications
- Data Center infrastructure
- Storage Area Network - Fiber Channel
- Emerging 40 and 100Gbps protocols compatible



ODU-L19 Dimensions and Capability

Dimensions(W*D*H)	Quantity of Cassette	Max Capacity
390mm*250mm*159mm	6	144

LX-N Cassette Technical Specifications

SPECIFICATION	LX-N-1	LX-N-2
Total Fiber Count	12	24
Front Adapter Type	LC Duplex	LC Duplex
Front Port Count	6	12
Rear Adapter Type	MTP/MPO	MTP/MPO
Rear Port Count	1	2

Operation Conditions

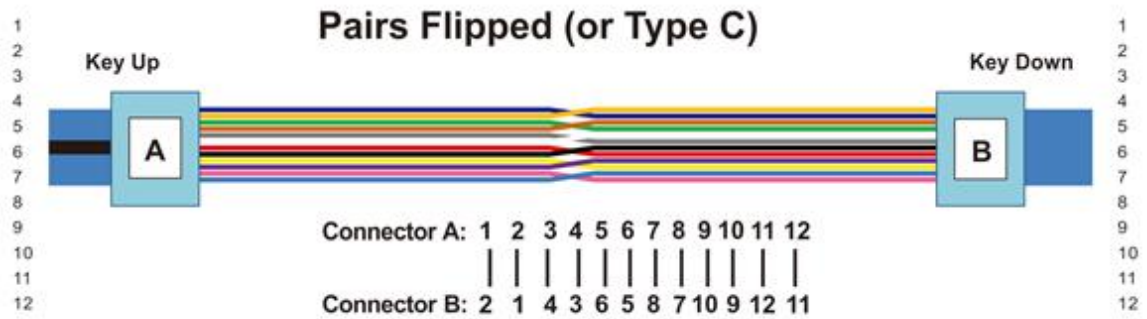
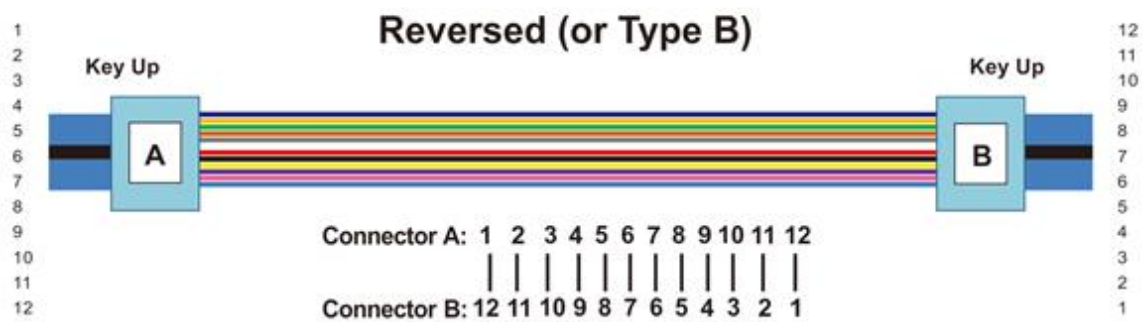
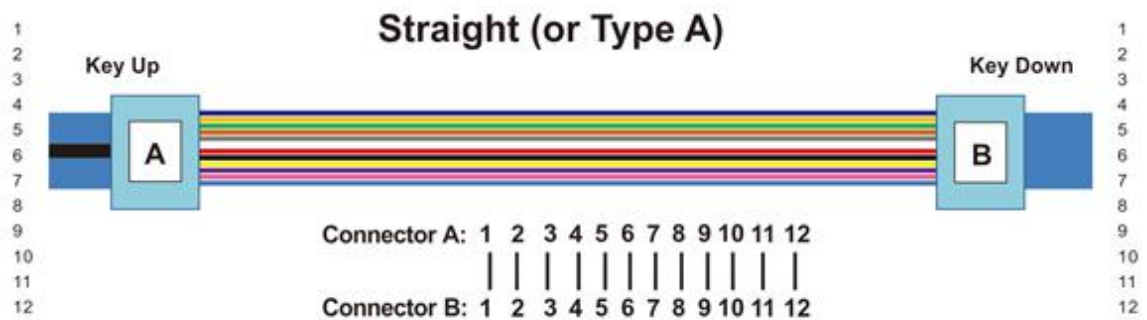
Operating Temperature	-20℃ -- +60℃
Storage Temperature	-40℃ -- +70℃
Humidity	90% at 30℃
Air Pressure	70kPa - 106kPa

Shipping Information

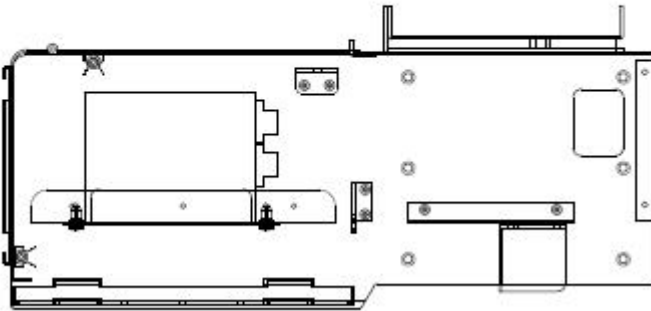
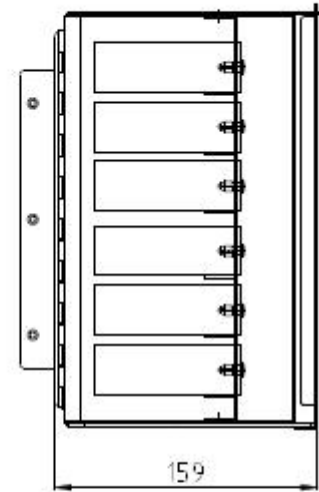
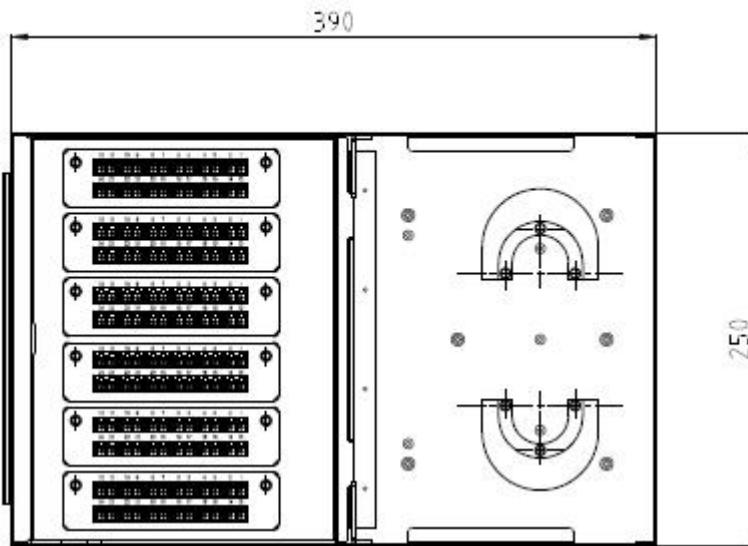
Package Contents	Patch panel, 1 unit Cassette, 6 pieces
Package Dimensions(W*H*D)	It depends on the dimensions of the product
Material	Carton box
Weight	It depends on the dimensions of the product
Lead Time	10-15 working days normally



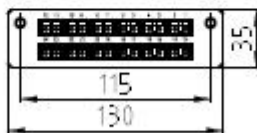
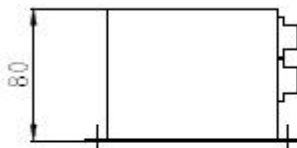
Pre-terminated MTP Technology-Polarity



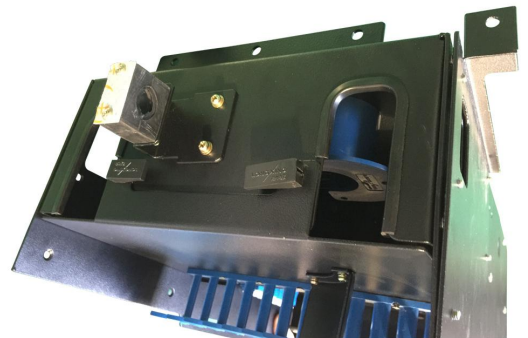
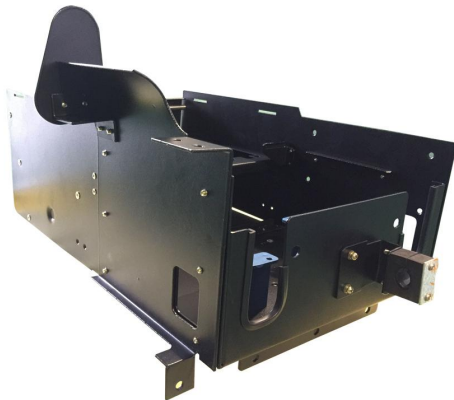
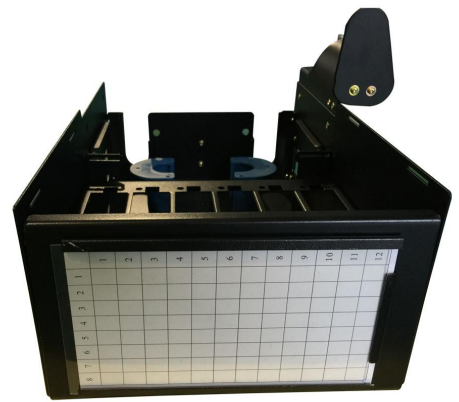
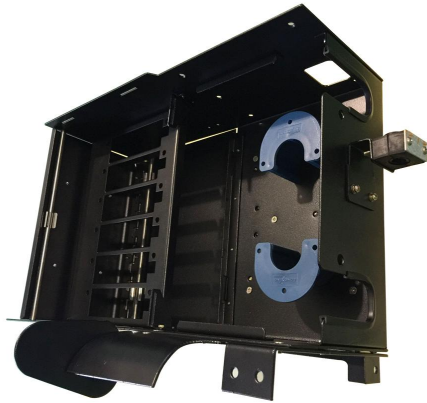
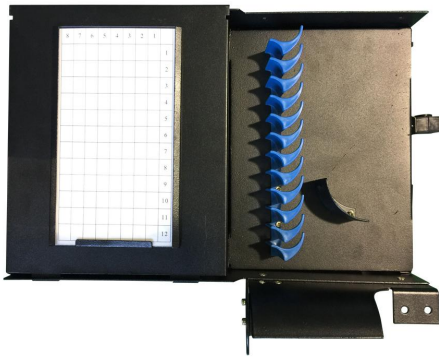
Technical Drawings

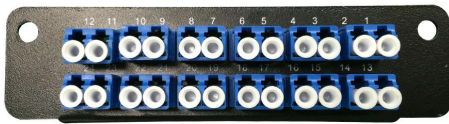
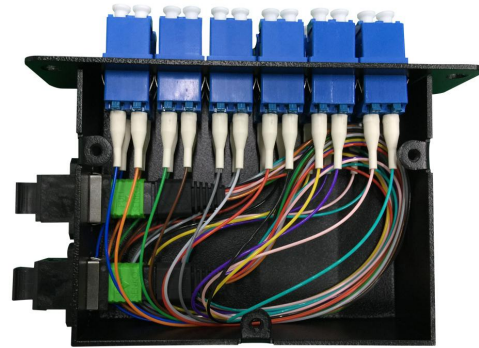
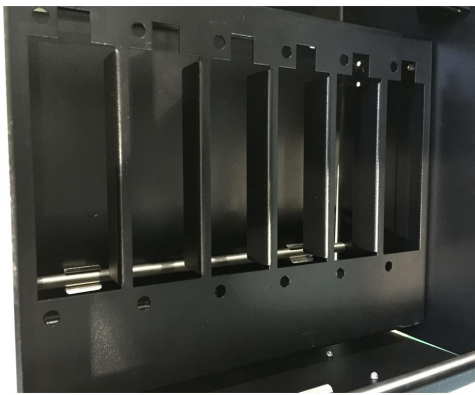
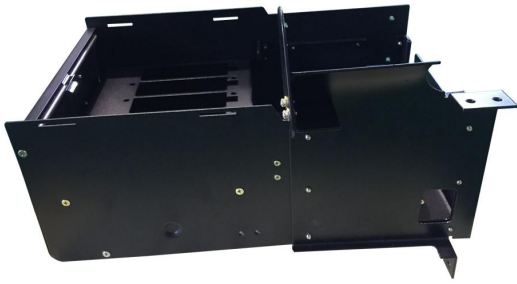


Full-loaded LX-N Cassettes



Part Details





LongXing Telecom
 Anju Road, Beilun District, Ningbo, China
 info@lxtelecom.com
 www.lxtelecom.com



LongXing Telecom



LongXingTelecom



+86 574 87908988



+86 574 87908188

Ver: 030816

LONGXING

Structured Cabling Solutions