

Fiber Optics Distribution Box

GP31-1P02A

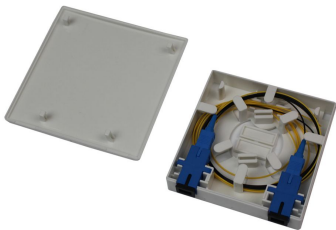
Overview

This mini style distribution box is widely applied in the FTTX network to connect drop cable and ONU devices through fiber port. It supports splicing, distribution, mechanical connection and wall mounted installation. The capacity of this box can be 1 core, 2 cores and 4 cores.



Features

- ABS material used ensures the body strong and light
- Easy installations: Mount on wall
- Easy operation: plug fiber with no need to open the shell
- Fiber cable inlets from every direction, supporting the cable inlets for different scenarios.
- Adoptable adapter: SC, LC



Dimensions and Capability	
Dimensions (W*H*D)	86mm*86mm*24mm
Adapter Capacity	Accommodates 4 fibers with LC adapters; 2 fibers with SC adapters
Number of Cable Entrance/Exit	Up to 4
Pigtail	G652D Φ0.9mm, 0.5m or as per request
Drop Cable(flat)	Indoor flat drop cable 2 x 3mm
Drop Cable(round)	Φ 5mm~ Φ 10mm
Curvature Radius	≥15mm
Optional Accessories	Adapters, Pigtails, Heat Shrink Tubes

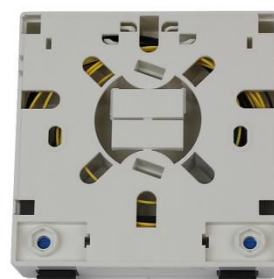
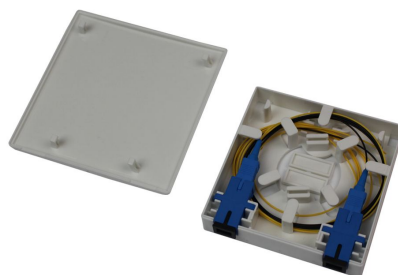
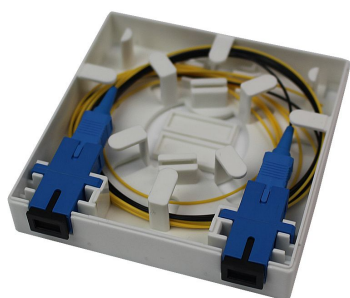
Operation Conditions

Temperature	-5℃ -- 60℃
Humidity	90% at 30℃
Air Pressure	70kPa – 106kPa

Shipping Information

Package Contents	Mini terminal box, 1 unit; Wall mount installation accessories, 1 set
Package Dimensions(W*H*D)	90mm*90mm*30mm
Material	Carton box
Weight	0.65kg
Lead Time	10-15 working days normally

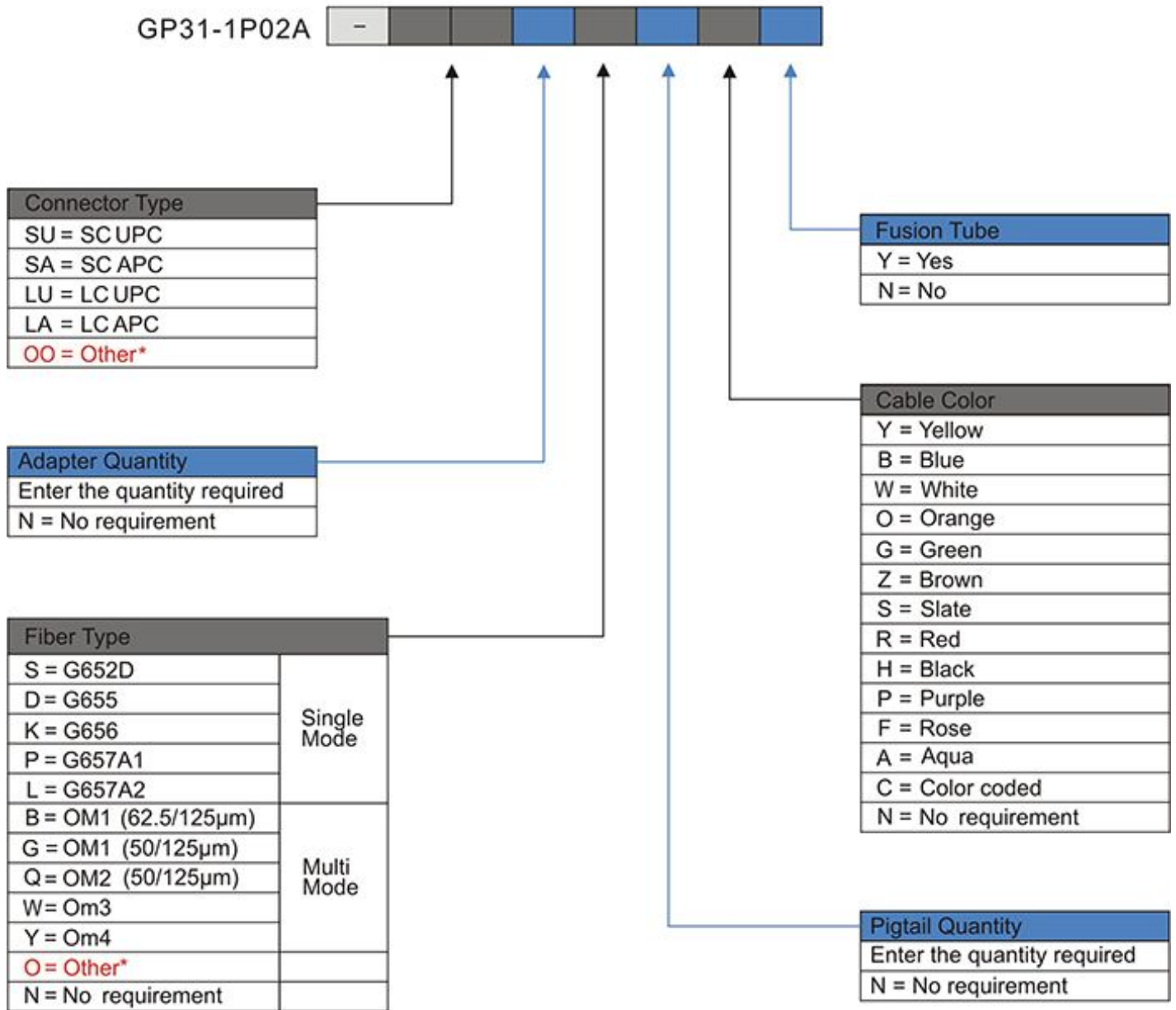
Part Details



Catalog Number

To order fiber optics distribution box only is GP31-1P02A.

To order fiber optics distribution box with accessories the LongXing catalog number is compiled as follows:



Ordering Example:

GP31-1P02A-SU4S4YN SC UPC, 4 Adapters, G652D, 4 Pigtails, Yellow cable, No fusion tubes

Note: * Cable diameter is 0.9mm.

If the required type of any item is not on the relevant list, please use "O" or "OO" as the red cells indicate, and kindly state the required type in the description of PO.