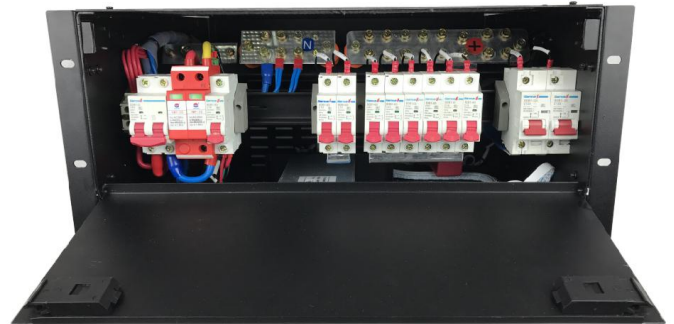


# Power Supply

48120S



## Power Specifications

	Specification	Remark
Input voltage	85~300V/45~65Hz	TN/TT grounding system
Output voltage	-42-58.5V	Nominal -53.5V
Rectifier power	2000W	LXPower2000/2000M/2000H
Surge current capacity	Nominal 20kA(8/20us), Max.40kA	AC input surge protection
	Nominal 10kA(8/20us), Max.20kA	DC output surge protection

## Mechanical Specifications

Parts	Dimension/mm	Weight/kg
Subrack	6Ux482.6x378	/
Rectifier module	40.5x106x298.5	1.7
Monitor	42.5x85x230	0.8
Battery chamber	/	/
Mounting	19" rack	/



## Overview

The LXPower48120S is specially designed to meet the demand for compact, flexible, high performance, high reliability power supply. The system consists of 4 units LXPower482000 high/standard efficiency rectifier modules of their mixture, a LX2000 monitor module, AC/DC distributors. 19 inches and 6U height standard structure adapts to various telecom cabinets and racks. Rectifier high efficiency is up to 97%, standard efficiency up to 92%.

## Features

- Cost effective solution: high integrated power supply including rectifier modules, controller, lightning protection, distributions
- Easy maintenance: hot plug rectifier module and fully front-access maintenance system for wall against or corner mounting
- Advanced battery management improves battery lifespan, especially suitable for poor AC mains application
- Extreme wide input voltage: 85V~300V AC
- Extreme wide operation temperature: -30°C~+65°C
- High/standard efficiency rectifier modules are compatible
- 6U height compact design
- System rated capacity: -53.5V DC/120A
- Whole monitor ports, RS232/485/SNMP, dry contactors
- LCD display with a state-of-the-art interface allows simple and convenient local set up, control and remote monitor
- Design standards: IEC/EN60950

## Applications

- Macro/micro BTS sites
- GSM-R
- Enterprise
- Broadband access
- Optical fiber transmission system

### Operation Ambient

Item	Specification	Remark
Storage temperature	-40~+70°C	/
Operation temperature	-30~+65°C	/
Safety	/	According to EN60950 and IEC60950
Communication	RS232+dry contact+SNMP	/
Operation moisture	10~95%	Non-condensing

### System Configuration

Model	DC Capacity	Rectifiers	Monitor	Battery Access
LXPower48120S	48V/120A	4 units	LX2000	1~2 strings

### Distribution

	LXPower48120S	Remark
AC input	63A/1P*1	/
Battery	125A/1P*2	/
DC output	63A/1P*2+32A/1P*2+16A/1P*2	LLVD standard configuration
/	10A/1P*2	BLVD standard configuration



## Part Details

