

MTP/MPO Cassette

LX-L Series Cassette

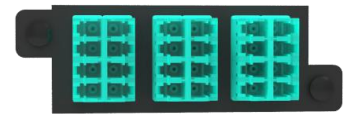
Overview

LongXing's pre-terminated MTP/MPO Adapter Cassettes provide a high density connection from LC, LC/APC, or SC fiber ports to MTP/MPO backbone trunks. These MTP/MPO cassettes are ideal for accompanying LongXing's High Density and MPO fiber distribution patch panel enclosures. Featured options include 12 fiber ports, or 24 fiber ports in single-mode or multimode selections per MPO/MTP connection.



Features

- Compatible with LongXing Rack Mount ODU-18 HD Series Fiber Enclosures/Patch Panels
- Up to 4 Fiber Cassettes per 1U Fiber Patch Panel
- Flexibility to Mix Adapter Plates with Cassettes in Patch Panel
- Available with LC, LC/APC, SC and MTP/MPO Adapters
- Easily Accessible MTP/MPO Ports for Connection to Trunk Cable
- Reliability 100% tested - combination of high quality components and manufacturing quality control guarantees product to the highest standards.



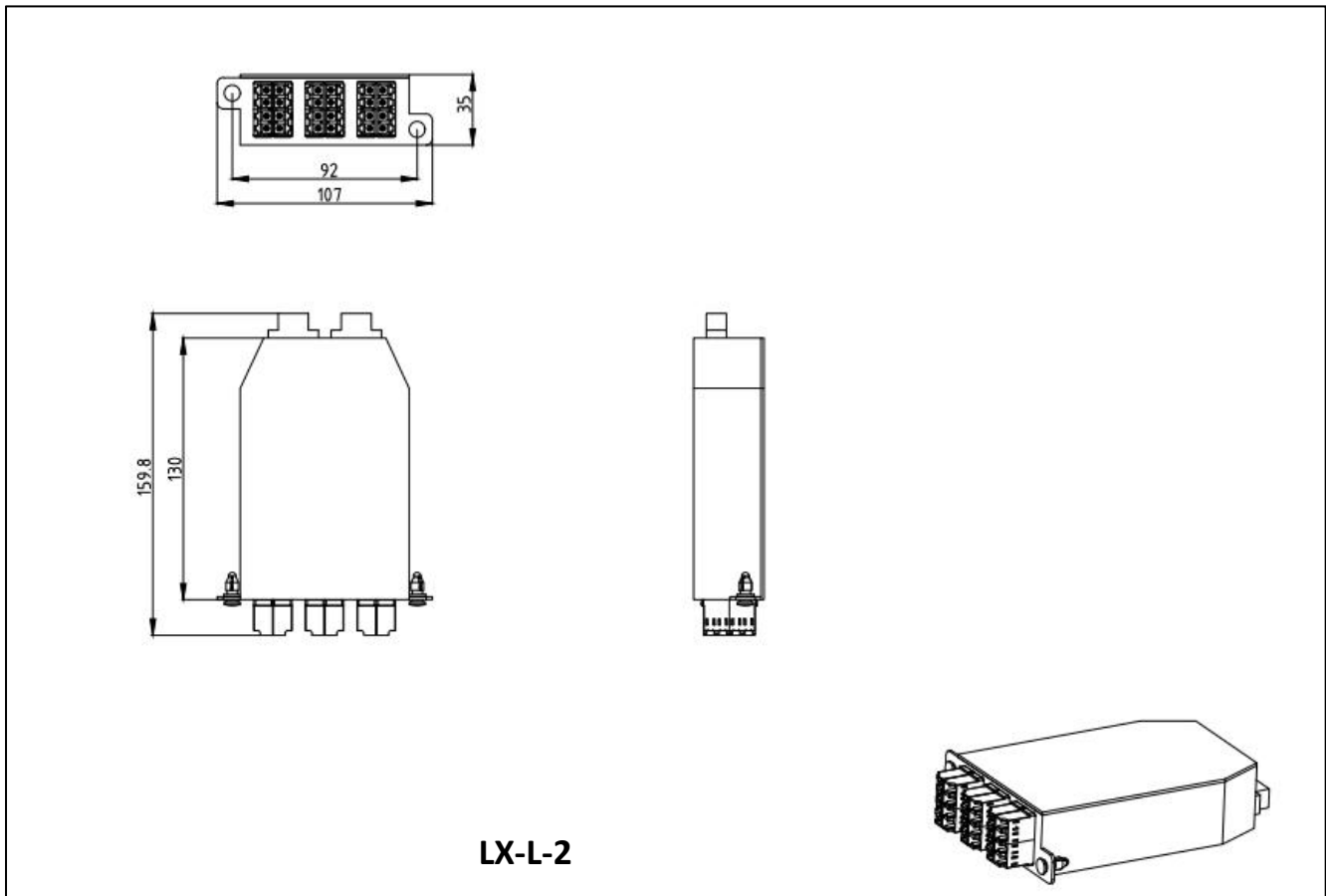
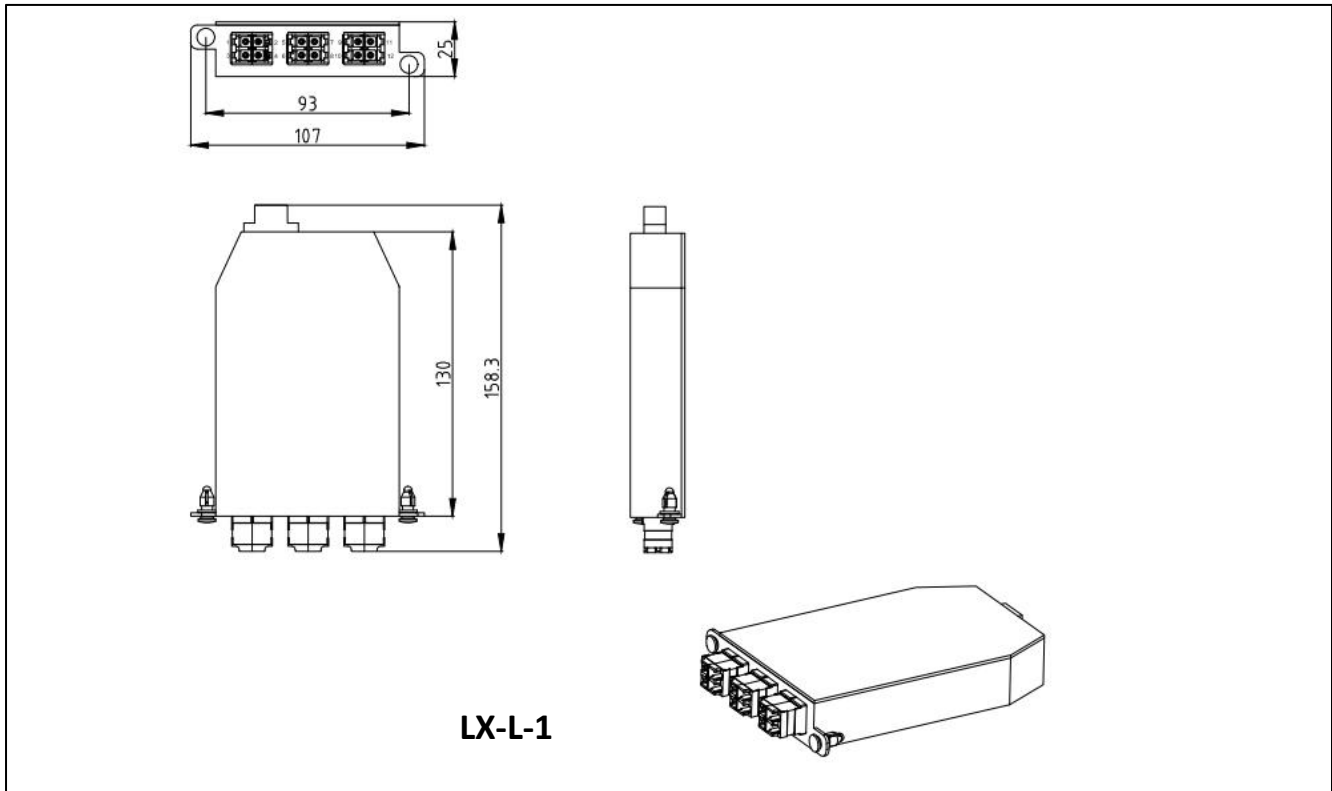
Applications

- Data centers
- LAN, WAN and SAN
- Interoffice cross-connects
- Campus environments

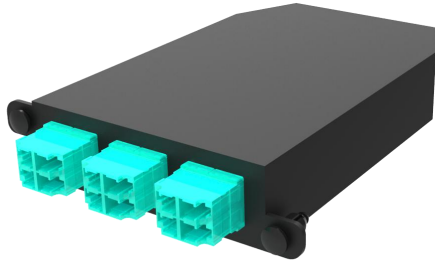
Technical Specifications		
SPECIFICATION	LX-L-1	LX-L-2
Total Fiber Count	12	24
Front Adapter Type	LC Duplex	LC QUAD
Front Port Count	6	6
Rear Adapter Type	MTP/MPO	MTP/MPO
Rear Port Count	1	2
Return Loss (MTP/MPO)	> 25 dB	
Insertion Loss (MTP/MPO)	Typical 0.15dB; Max 0.70dB	
Return Loss (LC)	> 50 dB	
Insertion Loss (LC)	Typical 0.15dB; Max 0.30dB	
Color	Black	
Material	Cold-rolled Steel	



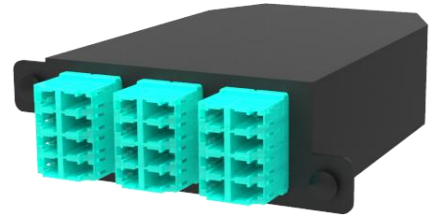
Technical Drawings



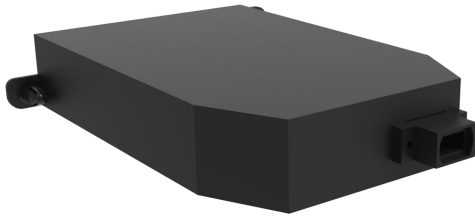
Part Details



LC Duplex



LC QUAD



MTP/MPO Connector Types



MPO/MTP Male with Pins



MPO/MTP Female without Pins

Wire map configurations

Straight Type A wiring (Straight Through)		Total flipped Type B wiring (Cross)		Pair flipped Type C wiring (Cross Pair)	
Fiber	Fiber	Fiber	Fiber	Fiber	Fiber
1	1	1	12	1	2
2	2	2	11	2	1
3	3	3	10	3	4
4	4	4	9	4	3
5	5	5	8	5	6
6	6	6	7	6	5
7	7	7	6	7	8
8	8	8	5	8	7
9	9	9	4	9	10
10	10	10	3	10	9
11	11	11	2	11	12
12	12	12	1	12	11



Catalog Number

LX-L- [] [] - [] [] [] [] [] []

Capacity
1 = 12 cores
2 = 24 cores

Material
M = Metal
C = Cold-rolled steel
S = Stainless steel
O = Other*

MTP/MPO Fan-out Cable
Y = Yes
N = No

Front Adapter Quantity
Enter the quantity required
N = No requirement

Front Adapter Type
SUD = SC UPC Duplex
SAD = SC APC Duplex
LUD = LC UPC Duplex
LAD = LC APC Duplex
LUQ = LC UPC Quad
LAQ = LC APC Quad
OOO = Others*

Ordering Example:

LX-L-1C-LUD12N 12 Cores, Cold-rolled Steel, LC UPC Duplex, 12 Front Adapters, No Fan-out Cable.

Note: *If the required type of any item is not on the relevant list, please use "O", "OO" or "OOO" as the red cells indicate, and kindly state the required type in the description of PO.