

# HD Optical Distribution Module

Series H1

## Overview

LongXing HD optical distribution module is designed for high density applications in optical distribution frames GPX82-9 Series and outdoor fiber cabinets. This module provides flexibility and functionality within a single frame without sacrificing space. Each module cassette contains up to either 24 SC or 36 LC connector adapters.



H1

## Features

- ABS material
- Light and beautiful plastic structure makes the adapters can be easily installed at the same level
- Installing guidance provided on the top of the adapters
- Protected patch panel offers secure environment for adapters, patch cords and pigtails
- Ensuring minimum fiber bending radius
- Adoptable adapter types: SC, LC
- Space saving
- Compact & simple design, easy to work, cost saving



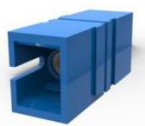
H2



H3

\*Increased connector boot space

## Adapters



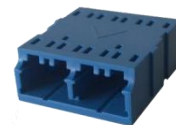
SC Simplex



LC Duplex



SC Duplex



LC Quad



LongXing Telecom



LongXing Telecom



LongXingTelecom

Anju Road, Beilun District, Ningbo, China

info@lxtelecom.com

www.lxtelecom.com



+86 574 87908988

+86 574 87908188

Ver: 040321

**LONGXING**

We Shape Solutions

## Dimension and Capacity

| Module                | H1                |                | H2                |                | H3                   |         |
|-----------------------|-------------------|----------------|-------------------|----------------|----------------------|---------|
| Dimension (W x H x D) | 326mm*13mm*280mm  |                | 326mm*13mm*280mm  |                | 326mm*13mm*306.5mm   |         |
| Entry Direction       | Rear              |                | Rear and right    |                | Rear, right and left |         |
| Cable Guide Direction | Left or Right     |                | Left or Right     |                | Left or Right        |         |
| Adapter Type          | SC Simplex/Duplex | LC Duplex/Quad | SC Simplex/Duplex | LC Duplex/Quad | SC Duplex            | LC Quad |
| Adapter Capacity      | 24                | 36             | 24                | 36             | 24                   | 36      |

## ODU-11 Dimensions and Capability

| Height | Depth(mm) | Width       | Module H1 |     | Module Quantity |
|--------|-----------|-------------|-----------|-----|-----------------|
|        |           |             | Capacity  |     |                 |
|        |           |             | SC        | LC  |                 |
| 1U     | 280       | 19"/21"/23" | 72        | 108 | 3               |
| 2U     | 280*2     | 19"/21"/23" | 144       | 216 | 6               |
| 3U     | 280*3     | 19"/21"/23" | 216       | 324 | 9               |
| 4U     | 280*4     | 19"/21"/23" | 288       | 432 | 12              |

## Operation Conditions

|              |                |
|--------------|----------------|
| Temperature  | -5°C -- 60°C   |
| Humidity     | 90% at 30°C    |
| Air Pressure | 70kPa – 106kPa |

## Shipping Information

|                           |                                 |
|---------------------------|---------------------------------|
| Package Contents          | HD optical distribution modules |
| Package Dimensions(W*H*D) | 376mm*65mm*330mm                |
| Material                  | Carton box                      |
| Weight                    | 0.65kg                          |
| Lead Time                 | 10-15 working days normally     |



LongXing Telecom

Anju Road, Beilun District, Ningbo, China

info@lxtelecom.com

www.lxtelecom.com



LongXing Telecom



LongXingTelecom



+86 574 87908988

+86 574 87908188

Ver: 040321

**LONGXING**

We Shape Solutions

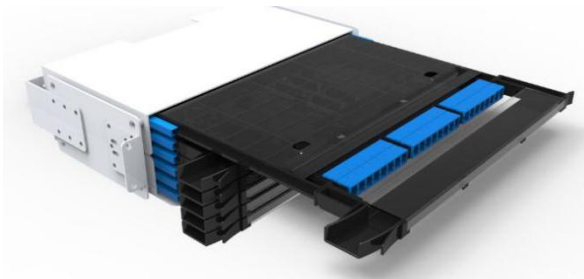
## Details



Optical Fiber Distribution Frame GPX82-9-1



Optical Fiber Distribution Frame GPX82-9-2




2U Patch Panel ODU-11 with SC Simplex Adapters



4U Patch Panel ODU-11 with LC Duplex Adapters



# Catalog Number

ODM-HI- 

| Module Type |
|-------------|
| H1 = H1     |
| H2 = H2     |
| H3 = H3     |

| Fusion Tube |
|-------------|
| Y = Yes     |
| N = No      |

| Adapter Type         |
|----------------------|
| SUS = SC UPC Simplex |
| SUD = SC UPC Duplex  |
| SAS = SC APC Simplex |
| SAD = SC APC Duplex  |
| LUD = LC UPC Duplex  |
| LUQ = LC UPC Quad    |
| LAD = LC APC Duplex  |
| LAQ = LC APC Quad    |
| NNN = No requirement |

| Cable Color        |
|--------------------|
| Y = Yellow         |
| B = Blue           |
| W = White          |
| O = Orange         |
| G = Green          |
| Z = Brown          |
| S = Slate          |
| R = Red            |
| H = Black          |
| P = Purple         |
| F = Rose           |
| A = Aqua           |
| C = Color coded    |
| N = No requirement |

| Adapter Quantity            |
|-----------------------------|
| Enter the quantity required |
| N = No requirement          |

| Fiber Type           |             |
|----------------------|-------------|
| S = G652D            | Single Mode |
| D = G655             |             |
| K = G656             |             |
| P = G657A1           |             |
| L = G657A2           |             |
| B = OM1 (62.5/125μm) | Multi Mode  |
| G = OM1 (50/125μm)   |             |
| Q = OM2 (50/125μm)   |             |
| W = Om3              |             |
| Y = Om4              |             |
| O = Other*           |             |
| N = No requirement   |             |

| Pigtail Quantity            |
|-----------------------------|
| Enter the quantity required |
| N = No requirement          |

## Ordering Example:

ODM-HI-H1SUS24P24YN H1 Module, SC UPC Simplex, 24 Adapters, G657A1, 24 Pigtails, Yellow cable, No fusion tubes

**Note:** \*If the required type of any item is not on the relevant list, please use "O", "OO" or "OOO" as the red cells indicate, and kindly state the required type in the description of PO.

