

# Optical Distribution Module

## Series GI

### Overview

Optical distribution modules are designed for LongXing's patch panel (ODU-L10), with the purpose of optic fiber organization, storage and fiber optic fusion protection.

### Features

- ABS material
- Light and beautiful plastic structure
- Space saving, designed for LongXing ODU-L10 Patch Panel.
- RoHS compliant, flame retardant
- Ensuring minimum fiber bending radius
- Moveable adapter holders for easy operation
- Multi functions: optical fusion, storage and distribution
- Tray have two different areas, one for splicing and the other for patching
- Available for FC, SC, LC duplex adapters



Series G



### Dimensions and Capability

|                          |                                |                                 |
|--------------------------|--------------------------------|---------------------------------|
| Direction for exit cable | Any of 4 directions            |                                 |
| Capacity                 | 12 fibers for SC or SC adapter | 24 fibers for LC duplex adapter |
| Color                    | Grey                           |                                 |
| Dimensions (H*W*D)       | 25mm*390mm*190mm               |                                 |



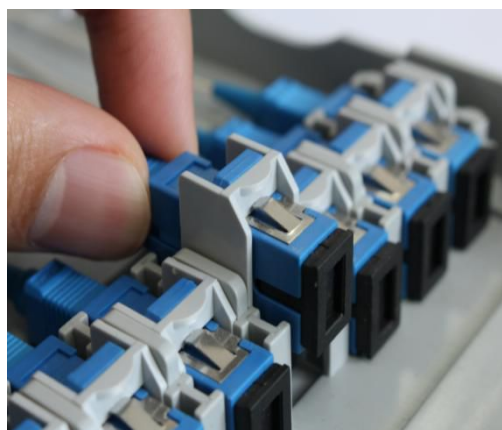
## Operation Conditions

|              |                |
|--------------|----------------|
| Temperature  | -5°C -- 60°C   |
| Humidity     | 90% at 30°C    |
| Air Pressure | 70kPa – 106kPa |

## Shipping Information

|                           |                              |
|---------------------------|------------------------------|
| Package Contents          | Optical distribution modules |
| Package Dimensions(W*H*D) | 75mm*440mm*240mm             |
| Material                  | Carton box                   |
| Weight                    | 0.65kg                       |
| Lead Time                 | 10-15 working days normally  |

## Part Details



# Catalog Number

ODM-GI-



| Module Type |
|-------------|
| G0 = G0     |

| Connector Type       |
|----------------------|
| SU = SC UPC          |
| SA = SC APC          |
| LU = LC UPC (duplex) |
| LA = LC APC (duplex) |
| NN = No requirement  |

| Adapter Quantity            |
|-----------------------------|
| Enter the quantity required |
| N = No requirement          |

| Fiber Type           |             |
|----------------------|-------------|
| S = G652D            | Single Mode |
| D = G655             |             |
| K = G656             |             |
| P = G657A1           |             |
| L = G657A2           |             |
| B = OM1 (62.5/125µm) | Multi Mode  |
| G = OM1 (50/125µm)   |             |
| Q = OM2 (50/125µm)   |             |
| W = Om3              |             |
| Y = Om4              |             |
| O = Other*           |             |
| N = No requirement   |             |

| Fusion Tube |
|-------------|
| Y = Yes     |
| N = No      |

| Cable Color        |
|--------------------|
| Y = Yellow         |
| B = Blue           |
| W = White          |
| O = Orange         |
| G = Green          |
| Z = Brown          |
| S = Slate          |
| R = Red            |
| H = Black          |
| P = Purple         |
| F = Rose           |
| A = Aqua           |
| C = Color coded    |
| N = No requirement |

| Pigtail Quantity            |
|-----------------------------|
| Enter the quantity required |
| N = No requirement          |

## Ordering Example:

ODM-GI-G0SU12P12YN G0 Module, SC UPC, 12 Adapters, G657A1, 12 Pigtails, Yellow cable, No fusion tubes

**Note :** \*If the required type of any item is not on the relevant list, please use "O" or "OO" as the red cells indicate, and kindly state the required type in the description of PO.

