

# Fiber Optics Splitter Box

GP31-1M08A

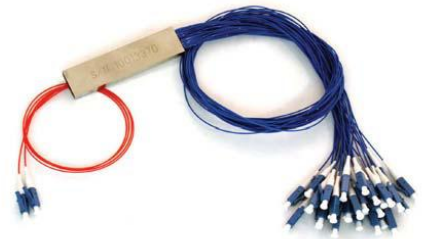
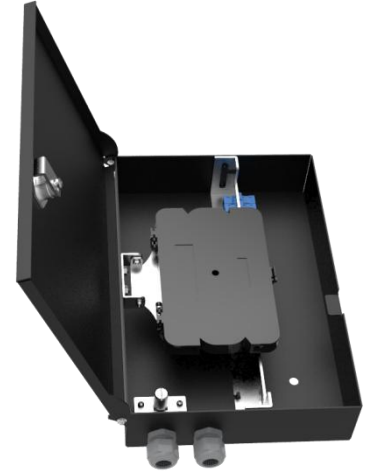
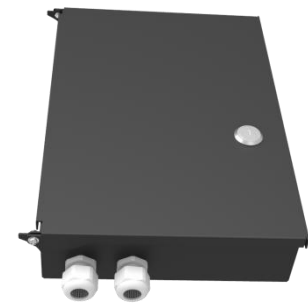
## Overview

LongXing GP31-1M08A wall mountable indoor splitter Box provides a flexible fiber management system for transitioning outside plant cable to inside cable and connectorized assemblies. Ensures professional splitting and branching of fiber based on bandwidth requirements with mechanical splitters on wall mountable applications and provides professional cable management.

OSPW PLC Mini Type Splitter must be ordered separately. The splitters are available loaded with either LC or SC type adapters.

## Features

- The box has functions of cable termination, splicing, distribution and cross-connection.
- Solid and fully-closed structure with the advantages of good performance of dust-proof, pleasing and neat appearance.
- 2:8 splitters can be put inside.
- Easy installations: Wall mountable.
- Lock provided on every box ensures the safety of the fibers.
- The central adapter board separates the incoming cables and the exiting fibers
- Removable adapter board for easy installation and operation
- Adapters are installed on our adapter board, no screws need for installing any type adapters, which is very easy for future maintenance and keeps the transmission loss at low level.
- Adoptable adapter types: SC, LC/Duplex



## Dimensions and Capacity

Box Type	Dimensions (W*D*H)mm	Capacity
Square Corner	180×52×264	8 SC

\* Customized design available upon request.

## Operation Conditions

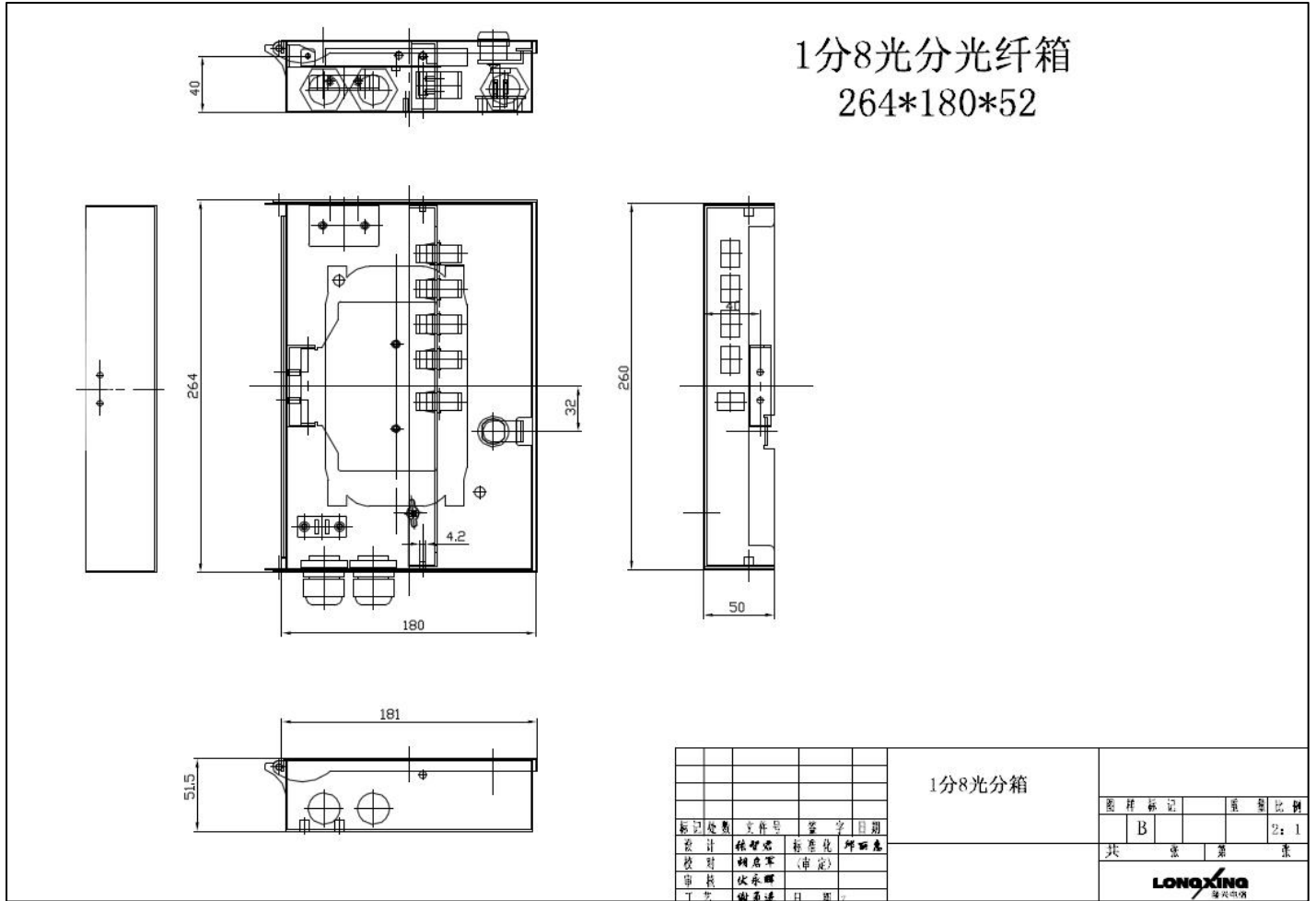
Temperature	-30°C - 75°C
Humidity	≤90% (at 30 °C)
Air Pressure	70kPa – 106kPa

## Shipping Information

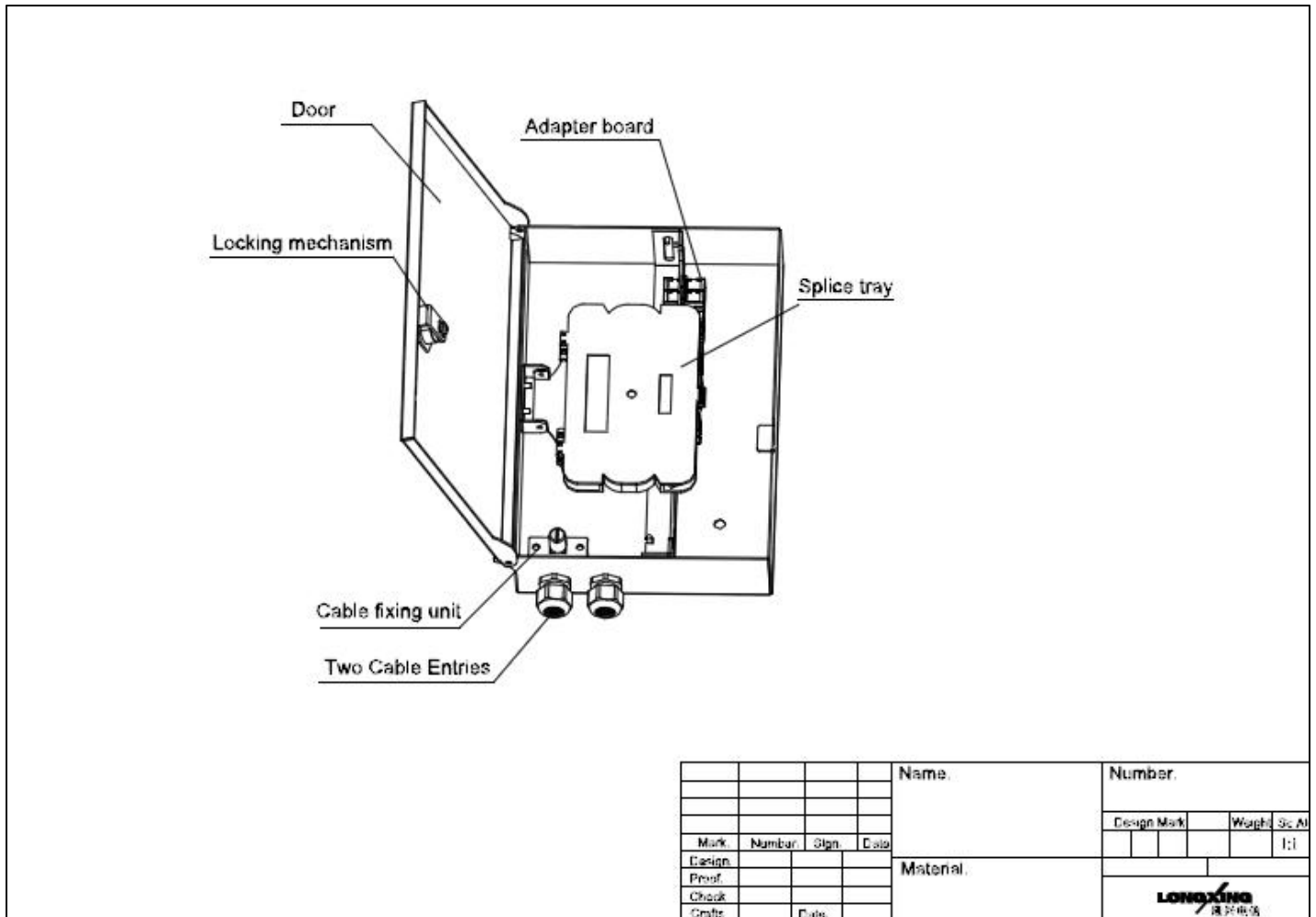
Package Contents	Terminal box, 1 unit; Installation accessories, 1 set
Material	Carton box
Lead Time	10-15 working days normally



# Technical Drawing



# Technical Drawing



					Name	Number		
						Design Mark	Weight	Size
Mark	Number	Sign	Date		Material			
Design								
Proof								
Check								
Grade			Date			<b>LONGXING</b> LONGXING TELECOM		



## Part Details

