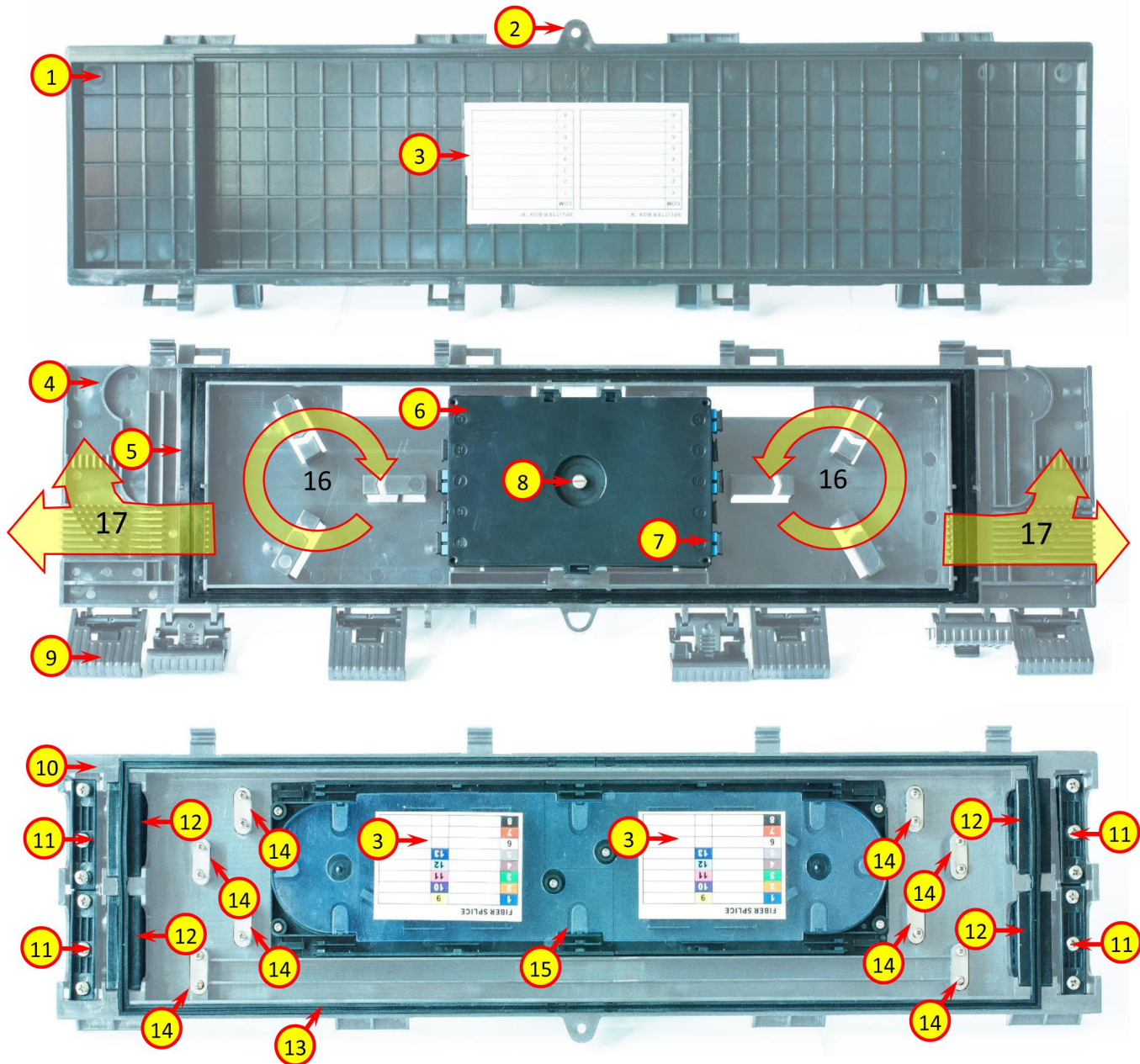


**GPJ83-12**

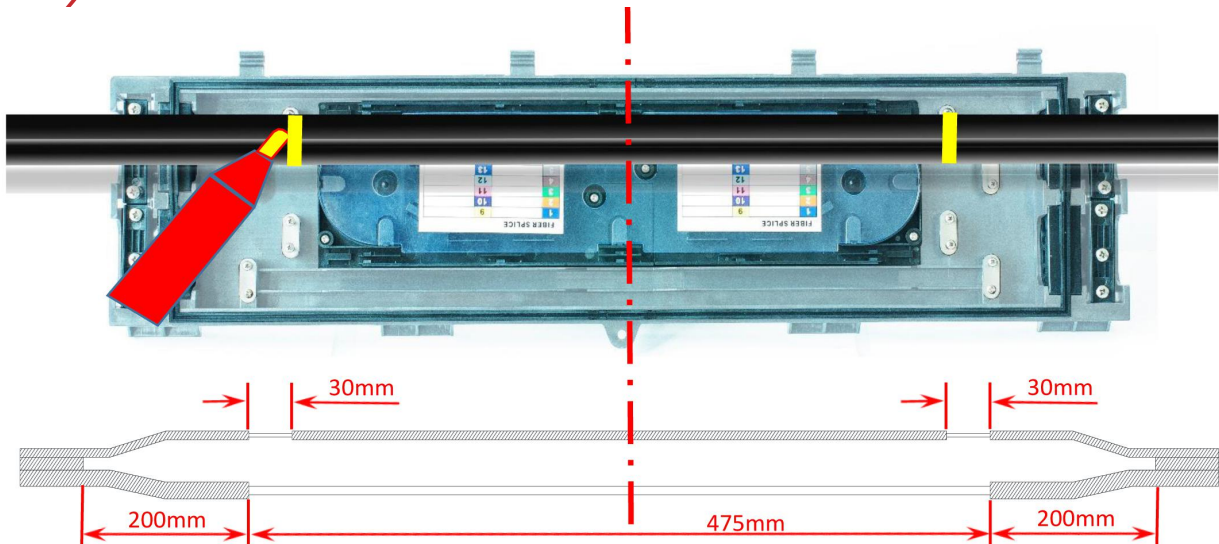
**Installation Manual**

No.	Name Of Components	Usage
1	Cover	Protecting fiber cable splices
2	Screw hole	Locking the closure for anti-theft
3	Sticky Label	Marking the cable
4	Middle Housing	Separating and storage the drop cable
5	Drop Cable Gasket	Sealing the drop cable port
6	Splitter Box	Fixing and storage the Splitter and Flange
7	Flange	Splicing the drop cable
8	Hand Screw	Screwing and fixing Splitter Box
9	Lock	Screwing the Housing
10	Base Housing	Installing and fixing Main Cable; installing Splice Tray
11	Main Cable Bracket	Locking Main Cable
12	Main Cable Gasket	Sealing Main Cable Port
13	Bottom Housing Gasket	Sealing the Housing
14	Strength Member Bracket	Locking Messenger and Strength Member
15	Splice Tray	Installing the spliced fiber
16	Drop Cable Arrangement part	Installing the Drop Cable
17	Exit of the Drop Cable	Arranging the Drop Cable

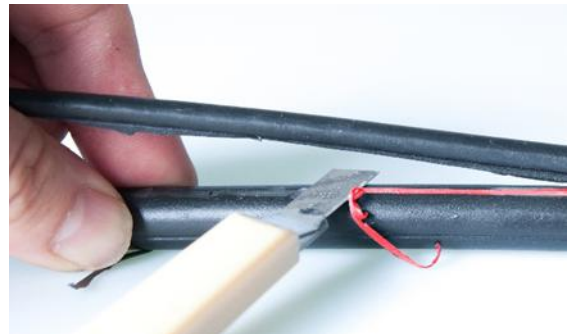


2. Separation of Cable Bracket (11), Input Cable Gasket (12) and Bottom Housing Gasket (13) from Base Housing

3. Main Cable Marking—Stripping--Cleaning



1. Mark on the cable to separate Cable and Messenger
2. Strip the Main Cable according to the drawing's dimension marking
3. Strip the Messenger for grounding according to the drawing's dimension marking



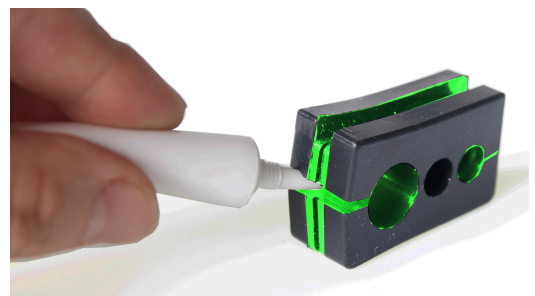
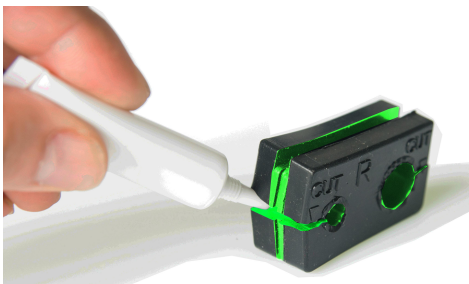
Notice: clean rough part which Gasket will be positioned well.

#### 4. Cut Main Cable Gasket (12)

1. Cut Main Cable Gasket



2. Grease well on the inside and around of Gasket

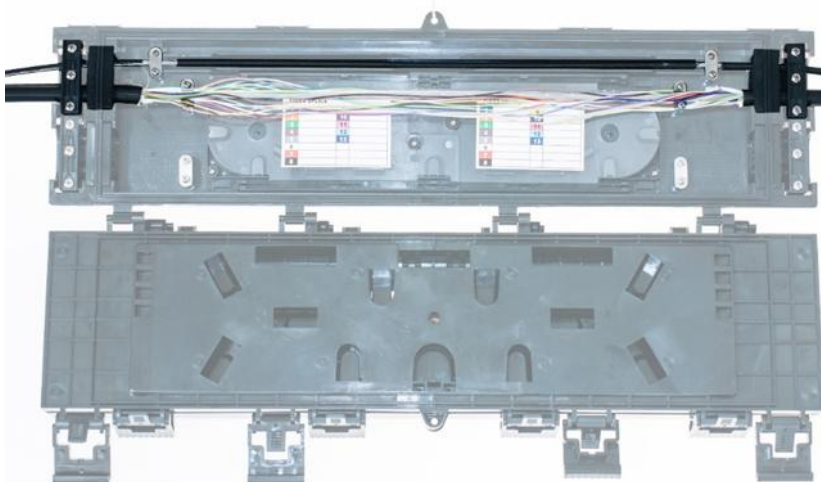




## 5. Fix the main cable and Base Housing.

- 1.Put in the Gasket to the Main Cable
- 2.Put the Main Cable Gasket and the Main Cable into the Base Housing
- 3.Fix and screw the Main Cable Bracket
- 4.Fix and screw the Messenger Wire Bracket and Strength Member Bracket(14)

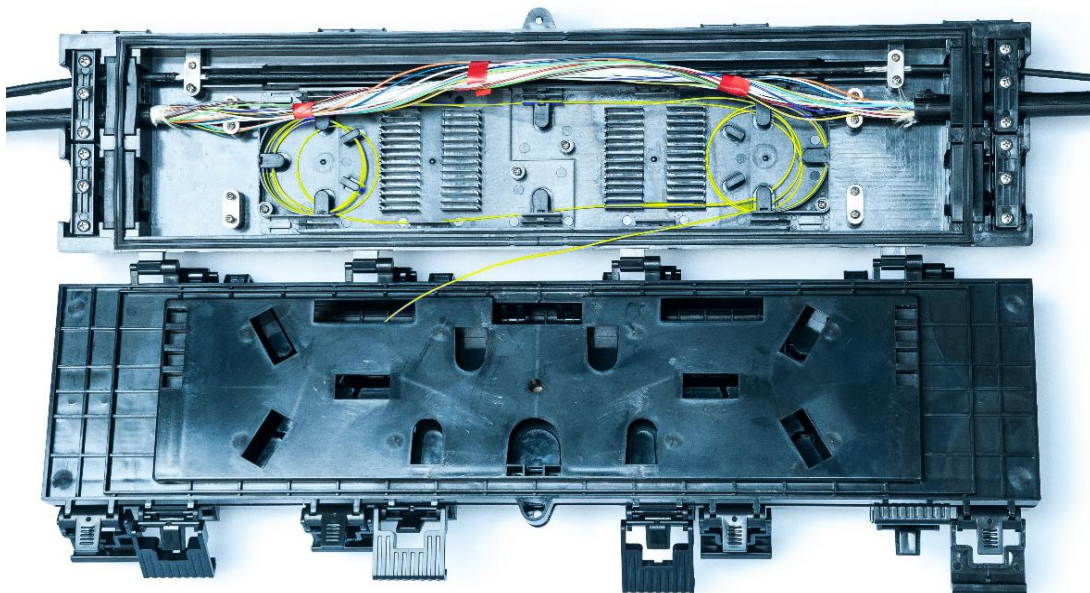
**Notice:** When you fix Main Cable on the Closure ,please lift up (put up )Closure to keep the Closure loose.

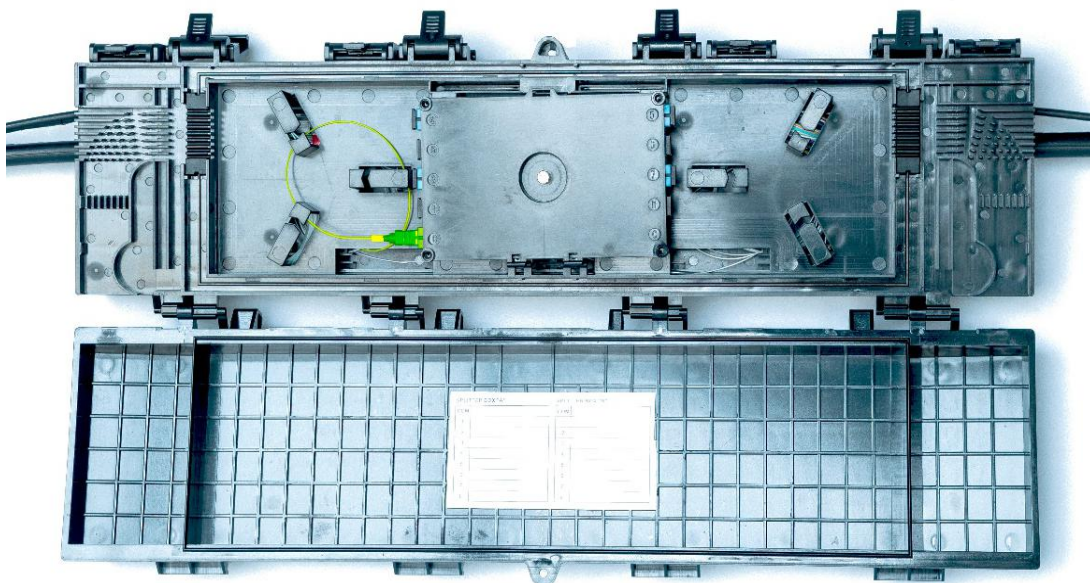


## 6. Separate the cable with jacket and cut the fiber which you are going to splice on the Splice Tray (15).

## 7.Link the input and output fiber to the Middle Housing (4).

Link the input fiber with plug and main cable fiber, then plugging the plug to the input end of Splitter Box (6) or link the pigtail with main cable fiber on Splice Tray (15) in Base Housing.



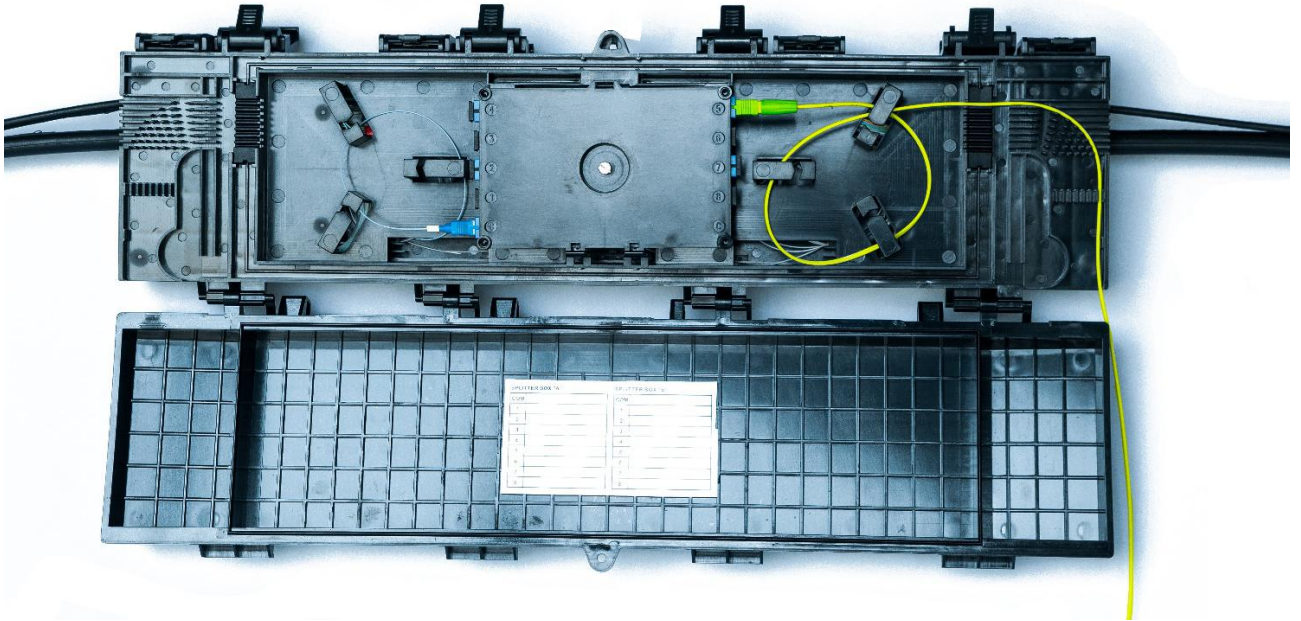


8. Cut Drop Cable Gasket's(5) cutting point and install the Drop Cable on the Middle Housing(4).

1. Cut Drop Cable Gasket's cutting point which you are going to install Drop Cable.
2. Grease well on the Drop Cable Gasket and then install the Drop Cable, arranging the extra Drop Cable to the Drop Cable Arrangement Part (16)on the Middle Housing.
3. Fix the Drop Cable according to the Drop Cable direction.







9. Close the cover (1), and arrange the Drop Cable on Cable Arrangement Part which is on the Bottom of Closure.

