

# Optical Fiber Distribution Frame

## GPX82-4

### Overview

LongXing optical fiber distribution frame GPX82-4 is made of top quality steel and deformed aluminum alloy and treated with galvanizing, oxidation and electrostatic plastic spraying. The frame has solid structure and pleasing appearance.

### Features

- Fully-closed structure with the advantages of good performance of dust-proof, pleasing and neat appearance.
- Enough space for fiber distribution and storage space and very easy for installation and operations.
- Fully front side operation, convenient for maintenances.
- Curvature radius of 40mm.
- Cable inlet system is installed on the top of the frame which has excellent performances for fixing the cables.
- Cables can be inlet either from the top or the bottom of the frame subject to different requirements.
- This frame is suitable for both common bundle cables and ribbon type cables.
- Reliable cable fixture cover and earth protection device provided.
- Integrated splice and distribution unit is adopted. Each unit holds up to 12 FC adapters and up to 24 SC/LC adapters. All units have specially designed slots and can be easily pulled out for operation at any time.
- Fiber separation hook of the splice and distribution module (the hook on the left) can be disassembled to fit for both wide and narrow structure frame.
- Every 6 units make up a module. Longxing's Dual SC adapters could double the capacity of Splice and distribution units' capacities to max 24FO each.
- All adapters are installed 40 degrees inclining to the operation surface which is easier for connecting and also protect installers' eyes from the lights.
- No screw needed for installing adapters.

### Optional Elements

- Hardware to fasteners, and fastening to the number of fiber needed can be offered on request.
- Elements to protect buffers depending on the number of cables needed can be offered on request.
- Accessories such as screws, nut, fasteners for raiser floor or concrete floor can be offered on request.
- Customer's logo can be printed on the upper left corner or upper right corner of the frame on request.

### Dimensions and Capability

| Dimensions(H*W*D) | Modules | Max Capacity (FC) | Max Capacity (LC/SC) |
|-------------------|---------|-------------------|----------------------|
| 2600*840*300      | 10      | 720               | 1440                 |
| 2200*840*300      | 8       | 576               | 1152                 |
| 2000*840*300      | 7       | 504               | 1008                 |

\*Customized designs are available upon request



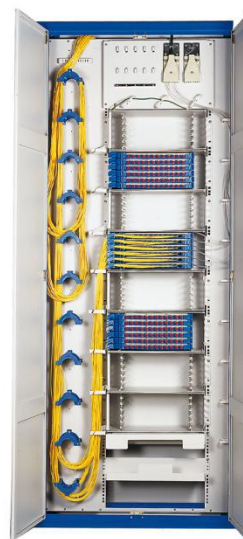
## Operation Conditions

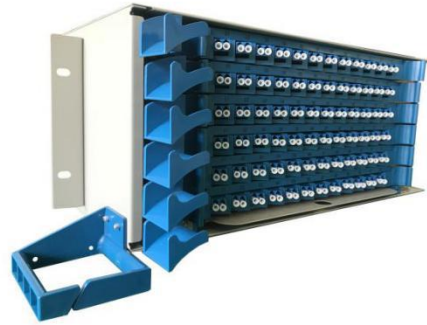
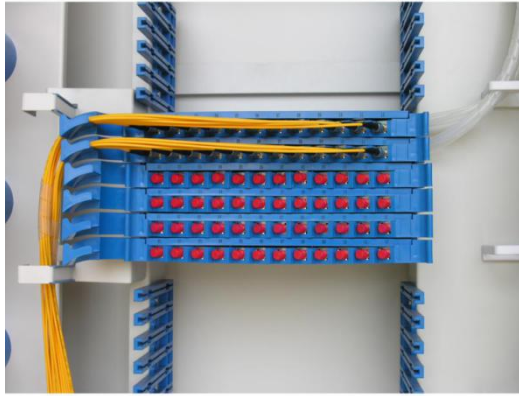
|              |                |
|--------------|----------------|
| Temperature  | -5℃ -- 60℃     |
| Humidity     | 90% at 30℃     |
| Air Pressure | 70kPa – 106kPa |

## Shipping Information

|                           |   |
|---------------------------|---|
| Package Contents          | ODF 1 unit                                  |
| Package Dimensions(W*H*D) | It depends on the dimensions of the product |
| Material                  | wooden box                                  |
| Weight                    | It depends on the dimensions of the product |
| Lead Time                 | 10-15 working days normally                 |

## Part Details





# Catalog Number

GPX82-4 - [ ] [ ] [ ] [ ] [ ] [ ] - [ ] [ ] [ ] [ ] [ ] [ ] - [ ] [ ] [ ] [ ] [ ] [ ] [ ] [ ] [ ] [ ]

| Dimensions           |
|----------------------|
| 1 = 2600 * 840 * 300 |
| 2 = 2200 * 840 * 300 |
| 3 = 2000 * 840 * 300 |
| O = Other*           |

| Material              |
|-----------------------|
| C = Cold-rolled Steel |
| S = Stainless Steel   |

| ODF Color  |
|------------|
| W = White  |
| B = Black  |
| G = Gray   |
| O = Other* |

| Patch Panel Type |
|------------------|
| 1 = 24           |
| 2 = 48           |
| 3 = 72           |
| 4 = 144          |

| Patch Panel Quantity        |
|-----------------------------|
| Enter the quantity required |
| N = No requirement          |

| Cable Inlet |
|-------------|
| Y = Yes     |
| N = No      |

| Protection Tubes Length   |
|---------------------------|
| Enter the length required |
| N = No requirement        |

| Cable Entry             |
|-------------------------|
| T = Top                 |
| B = Bottom              |
| M = Both top and bottom |

| Module Quantity             |
|-----------------------------|
| Enter the quantity required |
| N = No requirement          |

| Module type |
|-------------|
| A0 = A0     |
| A1 = A1     |
| A3 = A3     |

## Ordering Example:

GPX82-4-1CW1-4A0-4T10N 2600 \* 840 \* 300, Cold-rolled steel, White, 24 Cores patch panel, 4 Patch panels, Module A0, 4 Modules, Top cable entry, 10m Protection tubes, No cable inlet.

**Note :** \*If the required type of any item is not on the relevant list, please use "O" or "OO" as the red cells indicate, and kindly state the required type in the description of PO.



LongXing Telecom  
Anju Road, Beilun District, Ningbo, China  
info@lxtelecom.com  
www.lxtelecom.com



LongXing Telecom



LongXing Telecom



+86 574 87908988  
+86 574 87908188  
Ver: 011118