

# Optical Fiber Distribution Frame

GPX82-1-2



## Dimensions and Capability

Dimensions(H*W*D)	Modules	Capacity (FC)
2600*900*300	8	576
2200*900*300	6	432
2000*900*300	4	288

Customized designs are available upon request

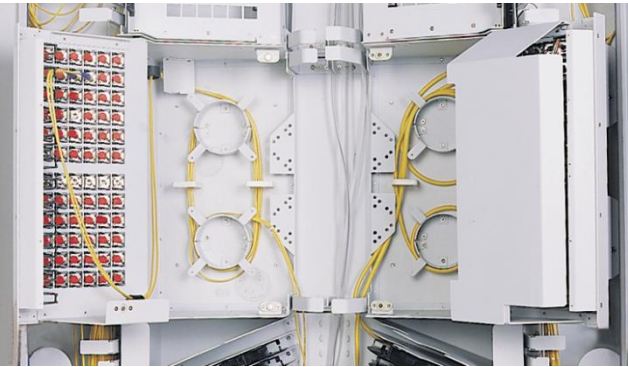


## Overview

LongXing optical fiber distribution frame GPX82-1-2 is made of top quality steel and deformed aluminum alloy and treated with galvanizing, oxidation and electrostatic plastic spraying. The frame has solid structure and pleasing appearance.

## Features

- This frame is made of top quality steel and deformed aluminum alloy and treated with galvanizing, oxidation and electrostatic plastic spraying. The frame has solid structure and pleasing appearance.
- Fully-closed structure with the advantages of good performance of dust-proof, pleasing and neat appearance.
- Enough space for fiber distribution and storage space and very easy for installation and operations.
- Fully front side operation, convenient for maintenances.
- Splice and distribution are separated and spread uniformly on the top and bottom sides of the frame. Compact structure and distinct layer for convenient management.
- Frisbee style (UFO style) splice tray is adopted; up to 48 trays can be hold in one frame.
- Curvature radius of 40mm.
- This frame is suitable for both common bundle cables and ribbon type cables.
- Reliable cable fixture cover and earth protection device provided



## Optional Elements

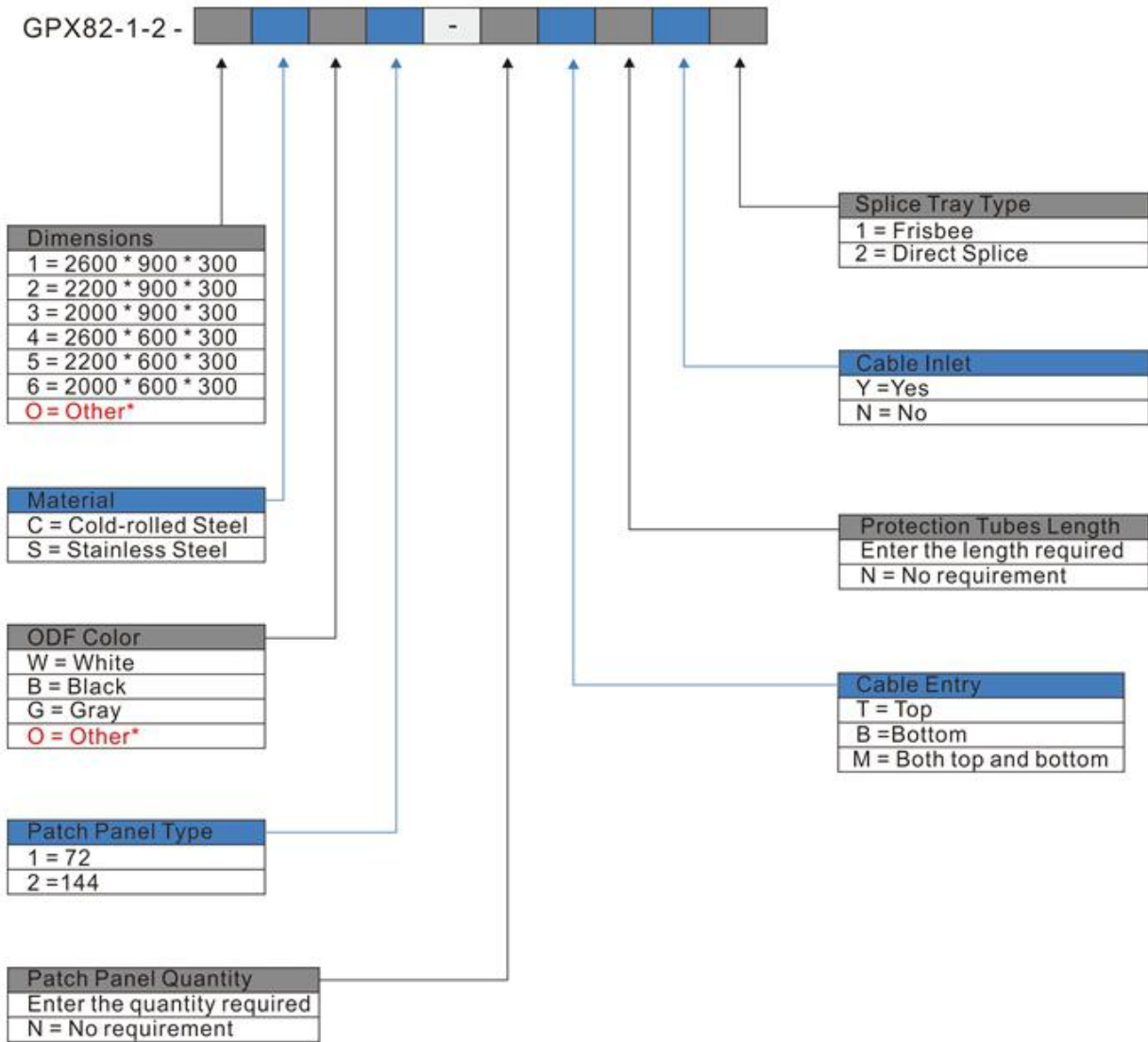
- Hardware to fasteners, and fastening to the number of fiber needed can be offered on request.
- Elements to protect buffers depending on the number of cables needed can be offered on request.
- Accessories such as screws, nut, fasteners for raiser floor or concrete floor can be offered on request.
- Customer's logo can be printed on the upper left corner or upper right corner of the frame on request.

Operation Conditions	
Temperature	-5°C -- 60°C
Humidity	90% at 30°C
Air Pressure	70kPa – 106kPa

Shipping Information	
Package Contents	ODF 1 unit
Package Dimensions(W*H*D)	It depends on the dimensions of the product
Material	wooden box
Weight	It depends on the dimensions of the product
Lead Time	10-15 working days normally



# Catalog Number



## Ordering Example:

GPX82-1-2-1CW1-4T10N2 2600 \* 900 \* 300 ,Cold-rolled steel, White, 72 Cores patch panel, 4 Patch panels, Top cable entry, 10m Protection tubes, No cable inlet, Direct splice.

**Note :** \*If the required type of any item is not on the relevant list, please use "O" or "OO" as the red cells indicate, and kindly state the required type in the description of PO.

