

# Digital Distribution Frame (75 Ω)

MPX55-75



## Technical Specifications

Operation Speed	2Mbit/s, 8Mbit/s, 34Mbit/s, 45Mbit/s, 140Mbit/s, 155Mbit/s
Contact resistance	Outer conductor $\leq$ 2.5M $\Omega$ , the increment $\leq$ 2.5M $\Omega$ after mechanical durability test Inner conductor $\leq$ 10M $\Omega$ , the increment $\leq$ 10M $\Omega$ after mechanical durability test
Insulation resistance	$\geq$ 1000M $\Omega$ , the voltage of test circuit is 500Vdc
Pressurization	1000Vac/min
Cross-talk prevention level between the circuit	$\geq$ 70dB (50 kHz-233MHz)
Interruption loss	$\leq$ 0.3dB (50 kHz-233MHz)
Return loss	$\geq$ 18dB (50 kHz-3.1MHz)
Pull-off force	Connected with cable, the coaxial connector can resist pulling force of more than 50N
Mechanical durability	After 1000 times of inserting and pulling-out of coaxial connector, the contact resistance, interruption loss and return loss still meet requirements, and there is still electro deposition on the contacting surface without base material exposed.



## Overview

A Digital Distribution Frame (DDF) is the interface when coaxial cable has to be terminated, organized or cross-connected in long-distant transport networks, or in access networks close to subscribers. LongXing is expert in producing DDF products and currently providing products to China's main telecom networks in 28 provinces. The frame is equipped with perfect earth system, and 75 Ω / 120 Ω convertor can be provided at user's requirement. 75 Ω Digital Distribution Frames are used to terminate, cross-connect and inter-connect. 75 Ω coaxial cables, and to supervise digital transmission equipment.

## Descriptions

- This frame is made of quality materials such as aluminum alloy, steel plate etc. The surface is treated by way of galvanization, oxidization, plastics coating etc. The structure is stable with pleasing appearance.
- Both closed type and open type can be selected. Open type frame is convenient for frame combination and capacity expansion.
- The wires are laid at two sides so as to enlarge capacity and save effective space of machinery house.
- Unit structure is flexible and convenient for deployment and installation:
- The unit plate is divided into two rows of ports (10 systems) or four rows of ports (21 systems) for user's selection.
- Rotary or fixed type structure can be adopted for each unit plate. Rotary unit plate can be turned down freely for convenient cable connection and maintenance.
- The unit plate can be assembled vertically or horizontally at user's discretion.
- The frame is equipped with perfect earth system.

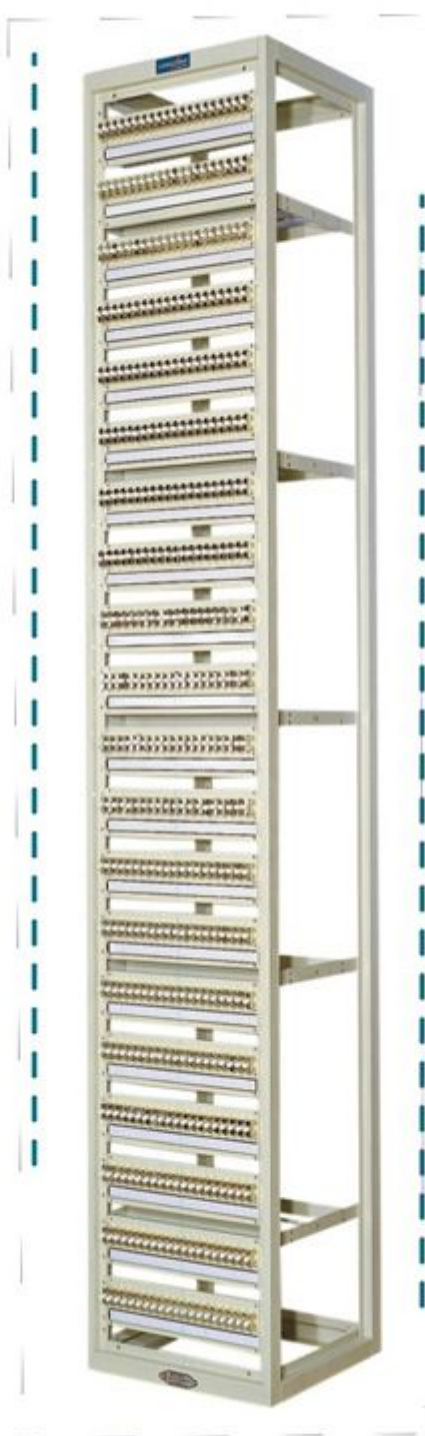
Specifications			
EXTERNAL DIMENSION (H * W * D)	MAXIMUM CAPACITY		REMARK
2600*480*300	10 systems/unit 200 system(20 units)/frame	One-side frame	User can choose either rotary or fixed unit.
2200(2000)*480*300	10 systems/unit 160 system(16 units)/frame	One-side frame	
2600*480*300	10 systems/unit 208 system(13 units)/frame	One-side frame	
2200(2000)*480*300	10 systems/unit 160 system(10 units)/frame	One-side frame	
2600*600*300	10 systems/unit 200 system(20 units)/frame	One-side frame	
2200(2000)*600*300	10 systems/unit 192 system(16 units)/frame	One-side frame	
2600*480*450	10 systems/unit 400 system(40 units)/frame	Double-side frame	
2200(2000)*480*450	10 system/unit 320system(32units)/frame	Double-side frame	
2600*600*450	10 system/unit 480system(40units)/frame	Double-side frame	
2200(2000)*600*450	10 system/unit 384system(32units)/frame	Double-side frame	



● VARIOUS OPEN TYPE DISTRIBUTION FRAMES



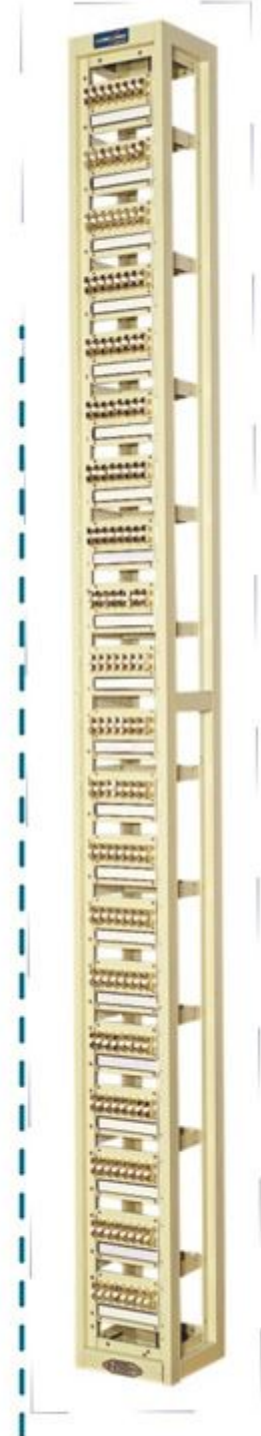
Frame combination



Horizontally-installed unit type



Narrow frame of vertical unit



Narrow frame of horizontal unit



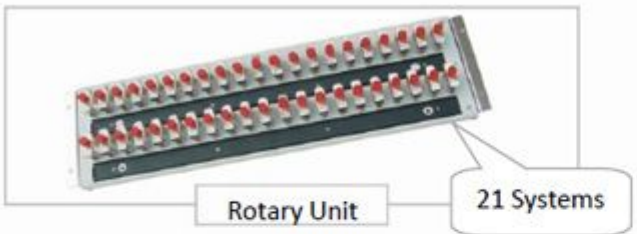
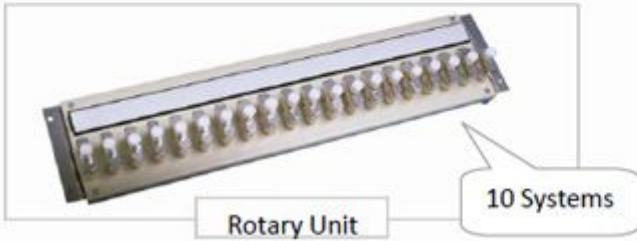
## ● VARIOUS CLOSED DISTRIBUTION FRAME



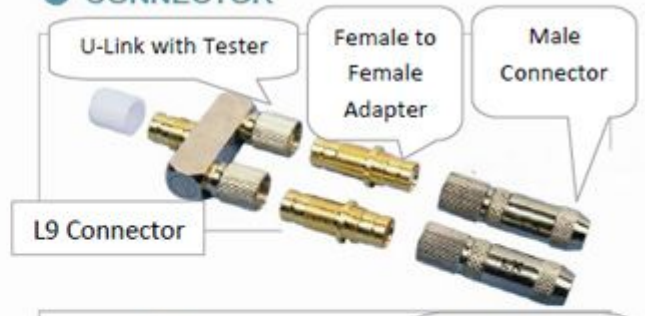
The installation of above units is block type (without screw), they can be freely disassembled with convenient installation. The gauge of connectors is quite small (15mm). The capacity can be larger for the same space. Layer of unit is clear. Each unit consists of receiving and remitting system.



● UNIT



● CONNECTOR



● CONVERTER



● TOOL & ACCESSORY

