

## CABLE LADDER

**For indoor use:** aluminum cable ladder and steel cable ladder (with electro zinc plated treatment)

**Application:** telecommunication room, network room, data center and telecommunication base.

**Feature:** nice design, various model, easy mounting, strong structure.

**For outdoor use:** perforated U shape steel cable ladder, flat steel cable ladder, L shape steel cable ladder (with hot dip galvanized treatment)

Classification by loading capacity

**Light duty:**

LBG-GT, L-D, 32K-32K, 34H-30H.

**Medium duty:**

KX-32K, KX-KX, DXC-32K, DXC-DXC, DXB-32K, DXB-KX, DXB-DXC.

**Heavy duty:**

DXB-32K, DXB-DXC, DXB-DXB,DXA-DXC,DXA-DXB, DXTDXC, DXT-DXB, DXT-DXA, DXT-DXT

50D type profile for side rail, the rung can be 50D, DX, KX, 32K, flat steel,U shape steel.

Half closed cable tray is available if the side rail is KX, DX or 50D.

LBG-GT



LBG



30H



34H



D



L



DX



50D



## ALUMINUM CABLE LADDER

Side rail LBG, section view size: 20mmx40mm

Rung LBG-GT, section view size: 16mmx28mm

**Application:** small data center

**Feature:** simple assembly, easy mounting, environment friendly.



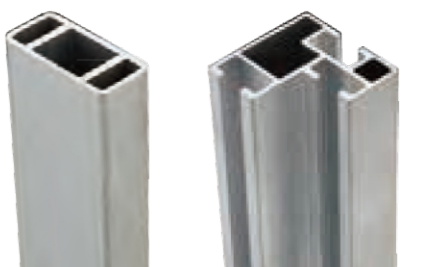
## ALUMINUM CABLE LADDER

Side rail L, section view size: 36mmx36mm

Rung D, section view size: 34mmx16mm

**Application:** small data center

**Feature:** simple assembly, easy mounting, environment friendly.





## ALUMINUM CABLE LADDER

Side rail 34H, section view size: 34mmx34mm  
 Rung 30H, section view size: 30mmx16mm  
**Application:** small data center  
**Feature:** easy mounting, nice and economy



## STEEL CABLE LADDER

Side rail U shape steel, 1.2mm thickness  
 Rung oval steel pipe,  $\Phi 20\text{mm} \times 30\text{mm}$ , 1.2mm thickness  
**Application:** small data center  
**Feature:** adopt the fine quality electro zinc plated chill steel, powder coated for indoor use, hot dip galvanized for outdoor use.  
 Simple assemble and easy mounting



## STEEL CABLE LADDER

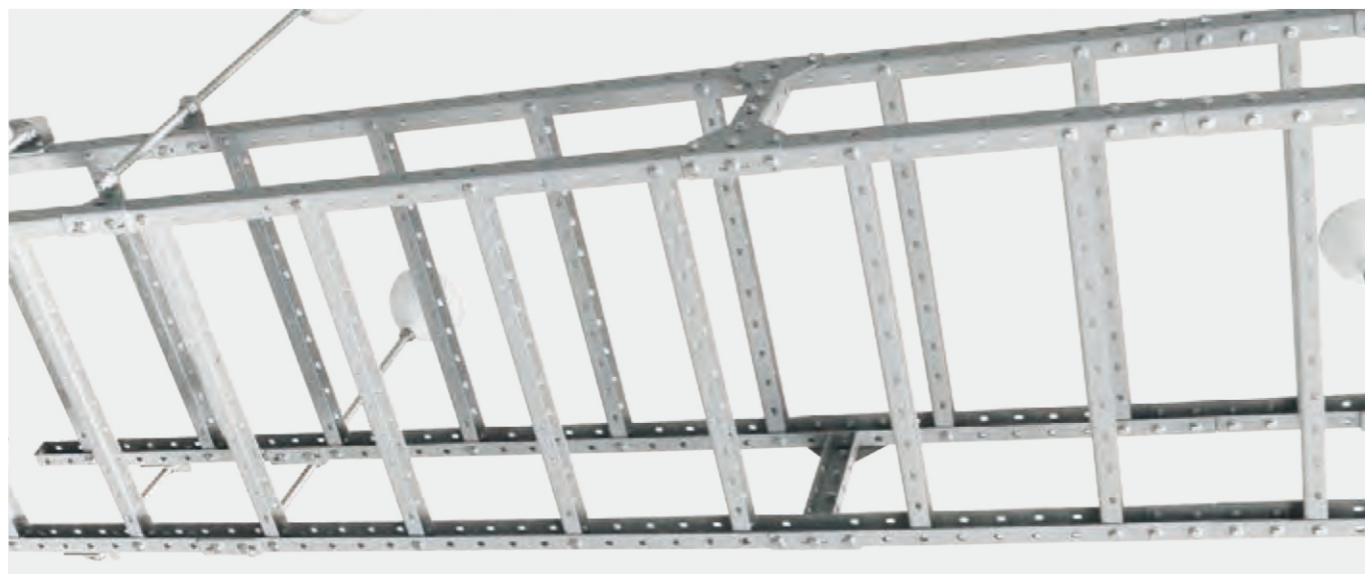
Side rail U shape steel, section view size: 24mmx40mmx24mm  
 Rung U shape steel, section view size: 16mmx30mmx16mm  
**Application:** Small data center  
**Feature:** simple assemble, easy mounting, nice design, environment friendly



## STEEL CABLE LADDER

Side rail angle steel with 5-6mm thickness,  
 Rung flat steel with 5-6mm thickness.  
**Application:** small data center  
**Feature:** powder coated for indoor use, hot dip galvanized for outdoor use.  
 Simple assemble and easy mounting.





## STEEL CABLE LADDER

Side rail U shape steel, section view size: 33mmx42mmx33mm

Rung U shape steel, section view size: 28mmx34mmx28mm, 1.5-3mm thickness

**Application:** medium duty and heavy duty data center

**Feature:** adopt the fine quality electro zinc plated chill steel, powder coated for indoor use, hot dip galvanized for outdoor use.

Simple assemble and easy mounting



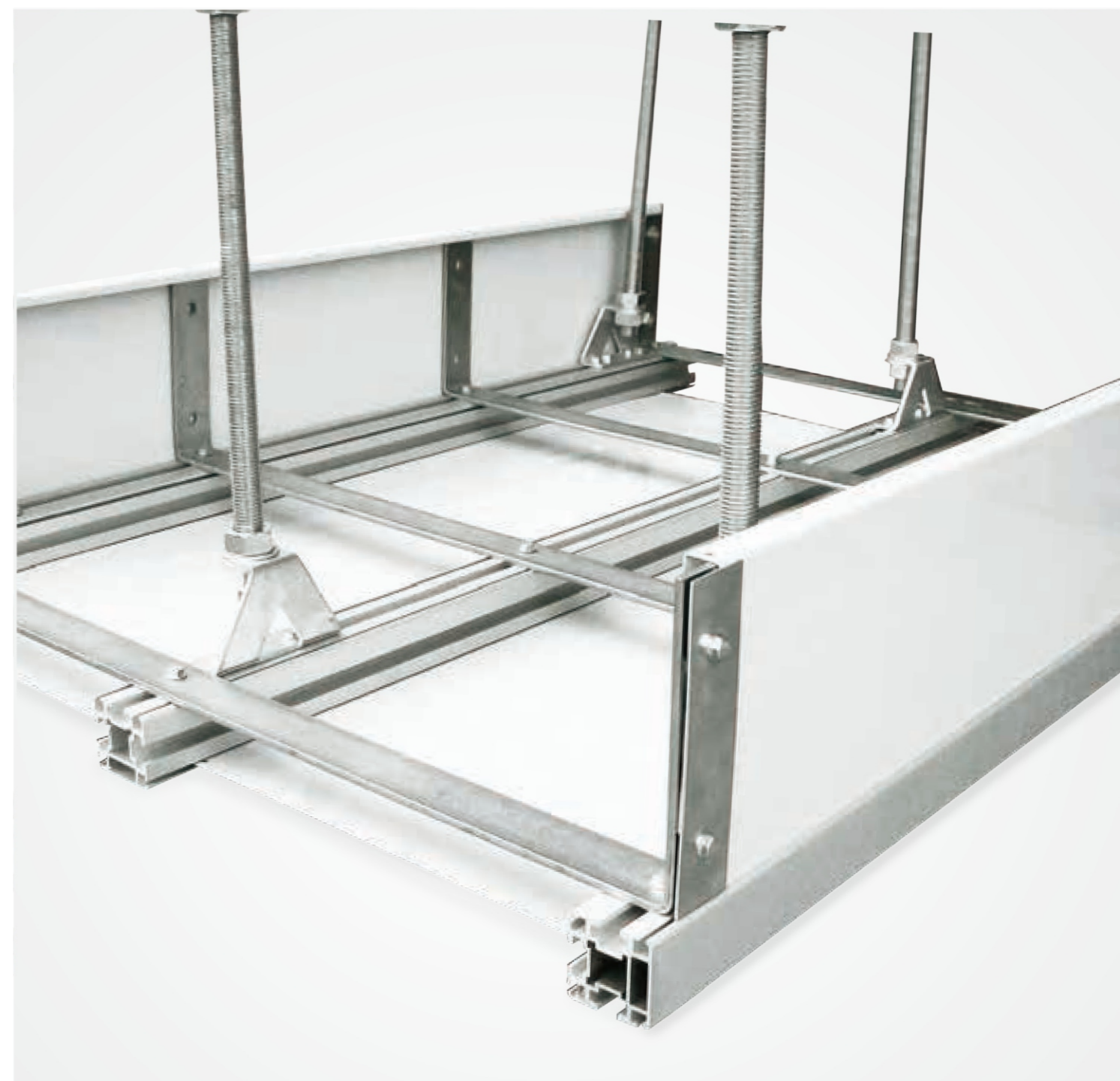
## ALUMINUM CABLE LADDER

DX type side rail, size: 31mmx45mm,

Rung DX type or 32K type

**Application:** medium duty and heavy duty data center

**Feature:** easy mounting, nice design and economy.



## ALUMINUM CABLE LADDER

Side rail 50D, section view size: 50mmx50mm

Rung 50D, size: 50mmx50mm

Optional rung 32K, size: 32mmx32mm

Optional rung DX, size: 31mmx45mm

Optional rung KX, size: 31mmx45mm

**Application:** medium and heavy duty data center

**Feature:** easy mounting, nice design and economy.

