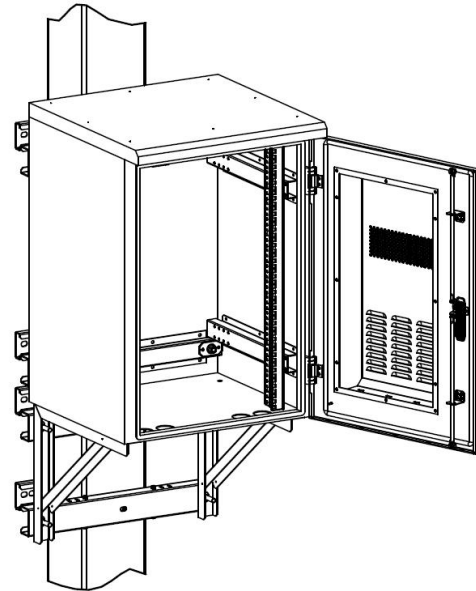
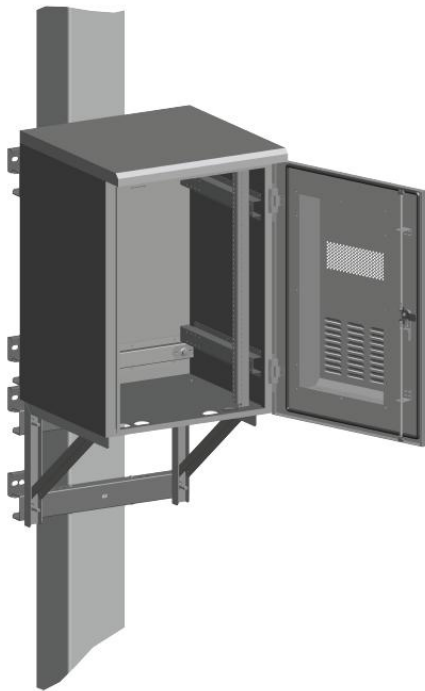


# Pole Mounted Cabinet

LX-NPX06-C



## Cabinet Specifications

Dimension(H*W*D)mm	880 x 600 x 600
Ingress Protection	IP55
Material	Outer case: Aluminum 2mm, Inner parts: Galvanized
Surface finishing	Powder painted as required
Structure	Sandwich Structure, Double Wall
Configuration	HEX(35W/K), LED light, Door sensor, Pole mounted accessories
Power	18-50W $\pm$ 10%
Frequency	100-240 VAC, 50Hz

## HEX Specifications

Dimension(H*W*D)mm	740 x 340 x 121
Power Supply AC	100-240 VAC, 50Hz
Cooling Capacity	35 W/K
IP Grade	IP55
Mounting Method	Door Mounting
Heat Exchanger Fan	Humidity seal
Cooling Capacity	35 W/C or 35 W/K
Maximum Internal air flow	200CFM
Maximum External air flow	200CFM
Motor Protection	Yes



---

## Overview

LongXing Outdoor cabinets are designed to provide a safe solution to install telecommunications equipment in outdoor conditions. These cabinets are offering protection against different weather conditions, dust and vandalism.

## Features

- The cabinet is dustproof, sun proof and rainproof, which is used in outdoor environment
- Cabinet design with IP55 (according to IEC 60529) protection class.
- The layout of the cabinet is reasonable, which will facilitate cable access and fixing. There are entrance holes individually for power cable, signal cable and optical cable.
- Have Ground System
- Lockable cabinet with vandal proof hinges and three-point locking mechanism
- Ambient temperature range: -40°C ~ +55°C.
- Storage temperature range: -50°C ~ + 70°C.
- Transport Temperature range: -50°C ~ +70°C.
- Have cooling system if the cabinet temperature is abnormally high.
- Air Pressure: 62kpa ~ 101kpa (similar to 0m ~ 5000m altitude).
- The electrical system is sufficient for the use of all equipment installed inside the cabinet.
- Door key is Heavy duty master key for outdoor type.
- It has a single front door with a heat exchanger.
- Standard version is equipped with: Door Sensor and LED light.
- Optional versions can contain: DC or AC cooling, heat exchangers, heaters, humidity sensors, smoke detectors.

## Equipment

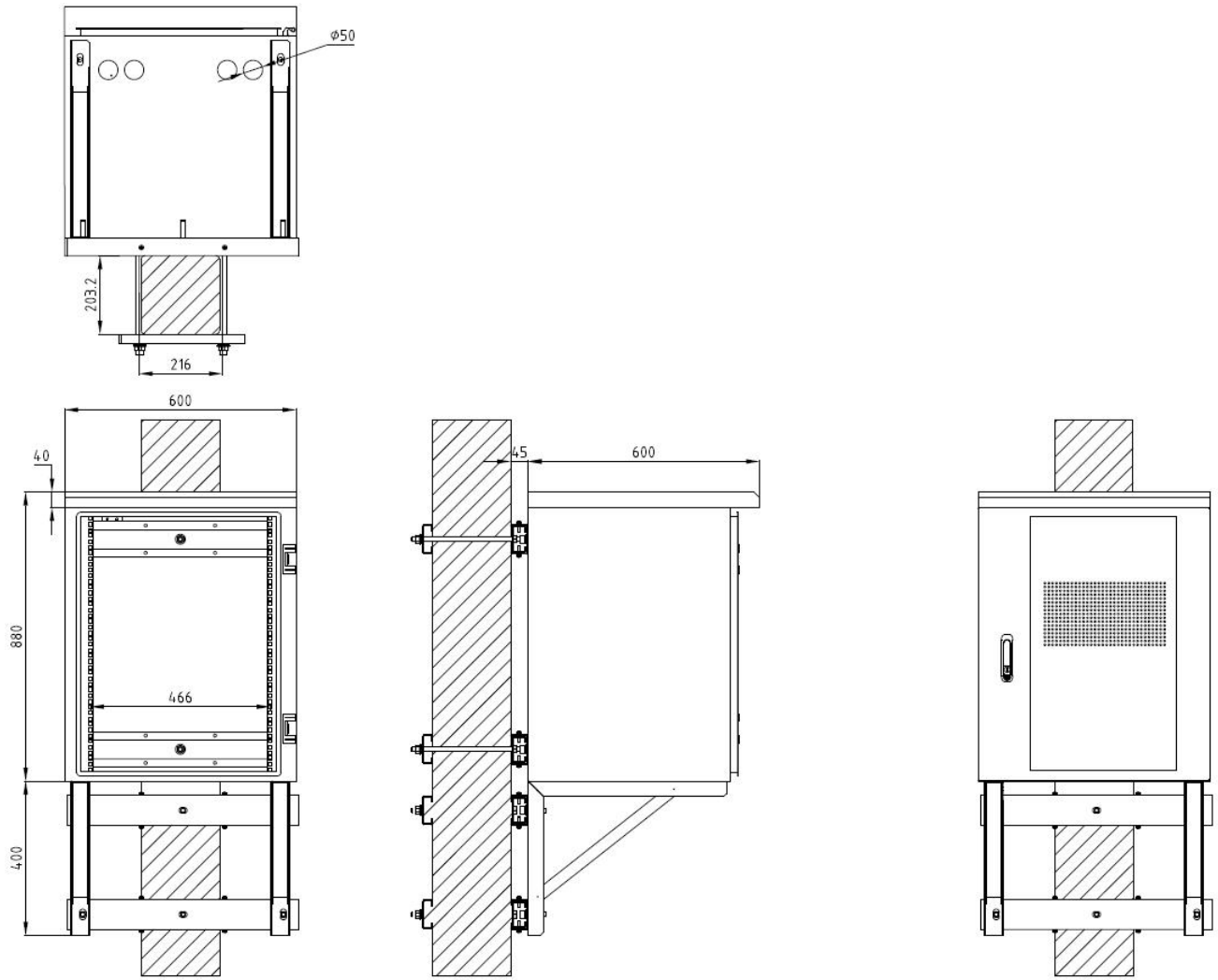
- Standard version is equipped with: Door Sensor and LED light.
- Optional versions can contain: DC or AC cooling, heat exchangers, heaters, humidity sensors, smoke detectors.

## Shipping Information

Package Contents	Outdoor cabinet 1 unit
Package Dimensions(W*H*D)	It depends on the product
Material	Wooden case or Carton with pallet
Weight	It depends on the product
Lead time	15-20 working days normally



# Drawing



# Details

