

# 96 Ports MPO-LC Patch Panel

## Ultra High Density 1U Rack Space

### Overview

LongXing's Ultra High Density 1U Rack is specially designed to accommodate high density cabling in high end Data Centre and Telecommunication central office environment. Front and rear cable management facilitates provides a neat and tidy solution for managing incoming and exiting cables.

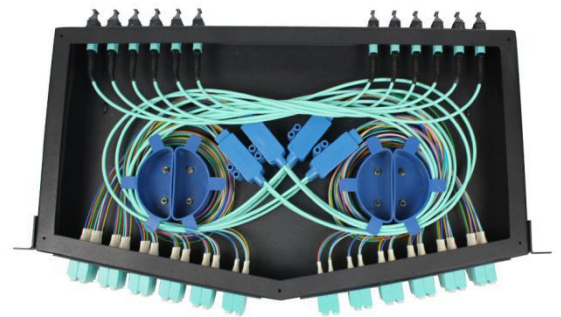
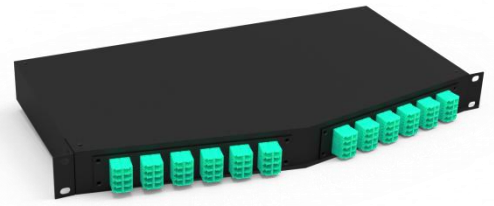
This rack mountable MPO/MTP patch panel ODU-L12 is loaded with 24 multimode OM3 LC QUAD connectors, giving it 96 ports total within 1U of rack space. Inside the MPO/MTP patch panel, the fiber is spliced out up to twelve MPO/MTP connectors, giving you an easy plug-and-play option for your high-density fiber application. This high-density MPO/MTP patch panel is constructed of light weight, yet durable, rolled steel. The shallow depth of the Ultra Panel makes it suitable for copper racking systems or telecommunication rack infrastructure. The 1U 96 fiber MPO/MTP UltraSlim Panel contains factory controlled and tested MPO/MTP-LC assemblies to deliver optical performance and reliability. Low loss MPO/MTP and LC Premium versions are offered featuring significantly improved insertion losses for demanding low power budget, high speed networks.

### Features

- 96 Fiber LC Ports in 1U
- Up to 12 MPO/MTP standard connectors
- Comprise from 24 QUAD LC adapters at the front and 12 MPO/MTP adapters at the back
- Preassembled 24 QUAD LC adapters, 12 MPO/MTP-LC fan-outs and 12 MPO adapters
- Available in SM, OM1, OM2, OM3 and OM4 fiber grades
- Angled Front Panel for Optimal Cable Routing
- Removable Top for Easier Fiber Cable Management
- Easily Accessible MPO/MTP Ports for Connection to Trunk Cable
- Compliant IEC-61754-7, EIA/TIA-604-5 & RoHS
- Factory terminated and tested
- MPO/MTP components feature superior optical and mechanical properties

### Applications

- Data communication applications
- Data Center infrastructure
- Storage Area Network - Fiber Channel
- Emerging 40 and 100Gbps protocols compatible



## Dimensions and Capability

Total Fiber Count	96
Dimensions(W*H*D)	482mm x250mm x44mm
Fiber Optic Mode	SM OM1 OM2 OM3 OM4
Insert Loss(LC)	0.18(Avg); 0.30(Max)
Return Loss(LC)	> 55/65dB(UPC/APC)

## Technical Specification

<b>Front</b>	
Front Adapter Type	LC
Front Port Count	96
Front Port Fiber Count	QUAD
<b>Rear</b>	
Rear Adapter Type	MPO/MTP
Rear Port Count	12
Rear Port Fiber Count	12

## Operation Conditions

Operating Temperature	-20℃ -- +60℃
Storage Temperature	-40℃ -- +70℃
Humidity	90% at 30℃
Air Pressure	70kPa - 106kPa

## Shipping Information

Package Contents	Patch panel, 1 unit
Package Dimensions(W*H*D)	520mm*380mm*120mm
Material	Carton box
Weight	6KG
Lead Time	10-15 working days normally



LongXing Telecom

Anju Road, Beilun District, Ningbo, China

info@lxtelecom.com

www.lxtelecom.com



LongXing Telecom



LongXingTelecom



+86 574 87908988

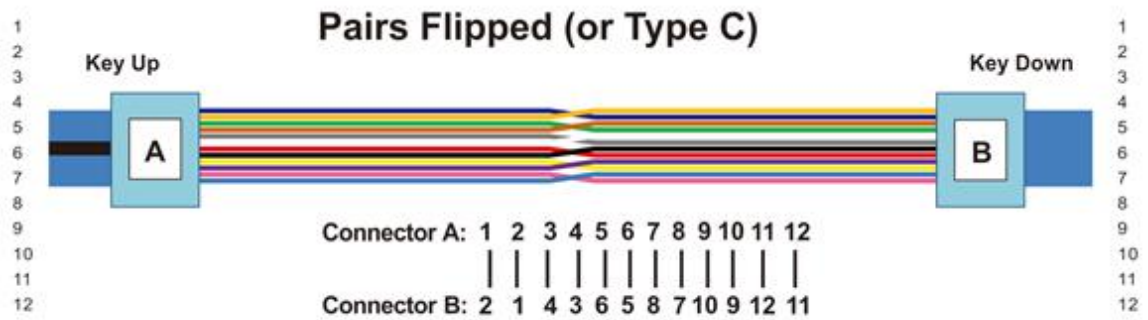
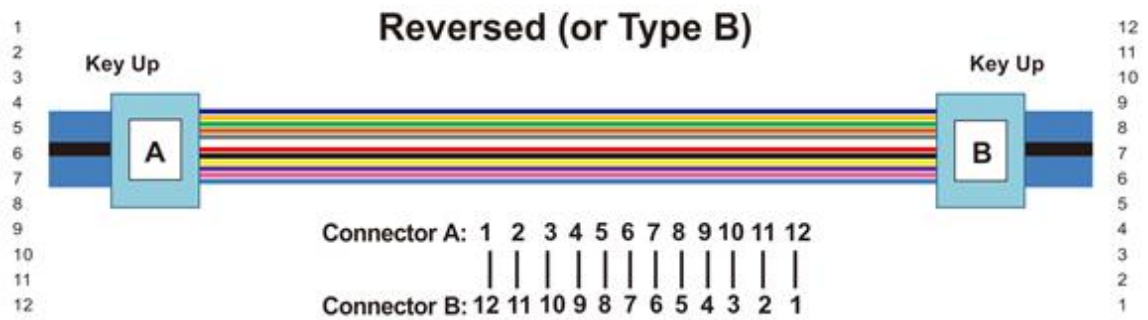
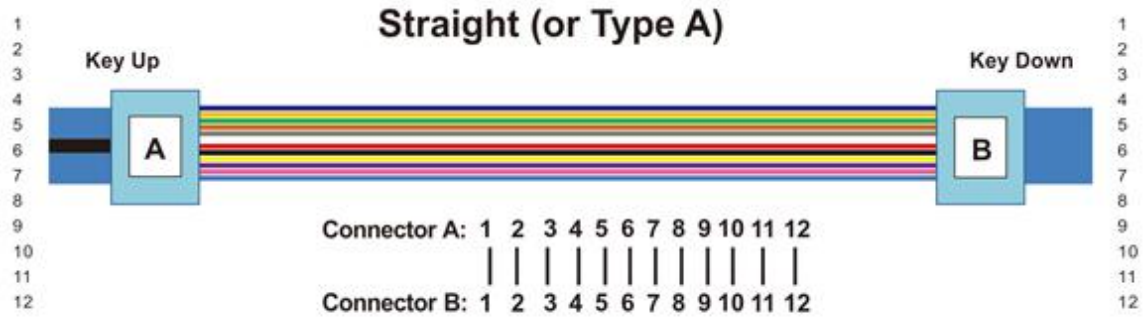
+86 574 87908188

Ver: 160616

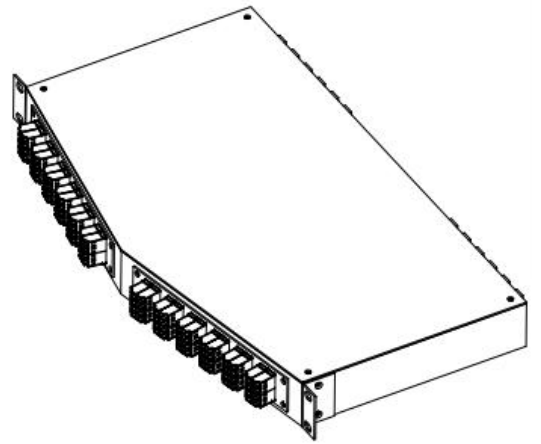
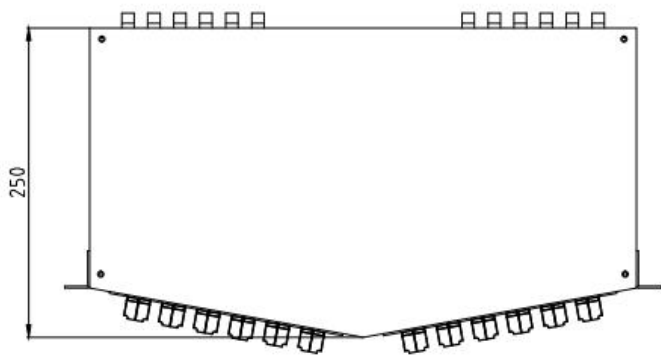
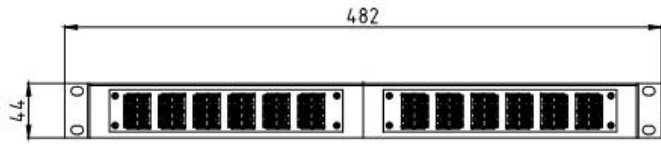
**LONGXING**

Structured Cabling Solutions

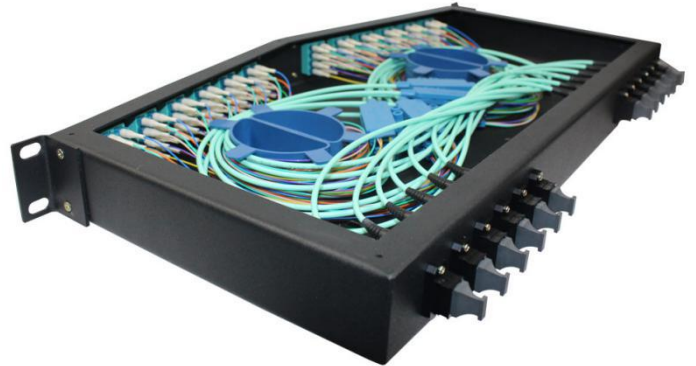
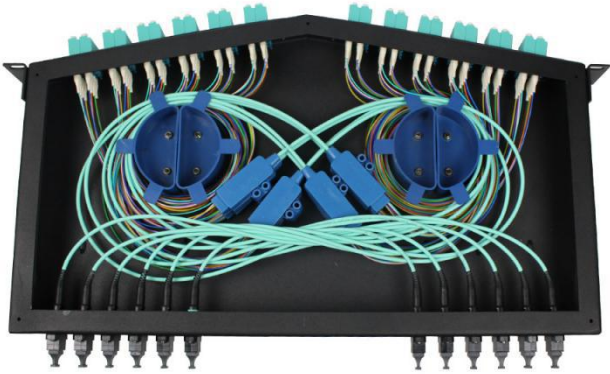
# Pre-terminated MTP Technology-Polarity



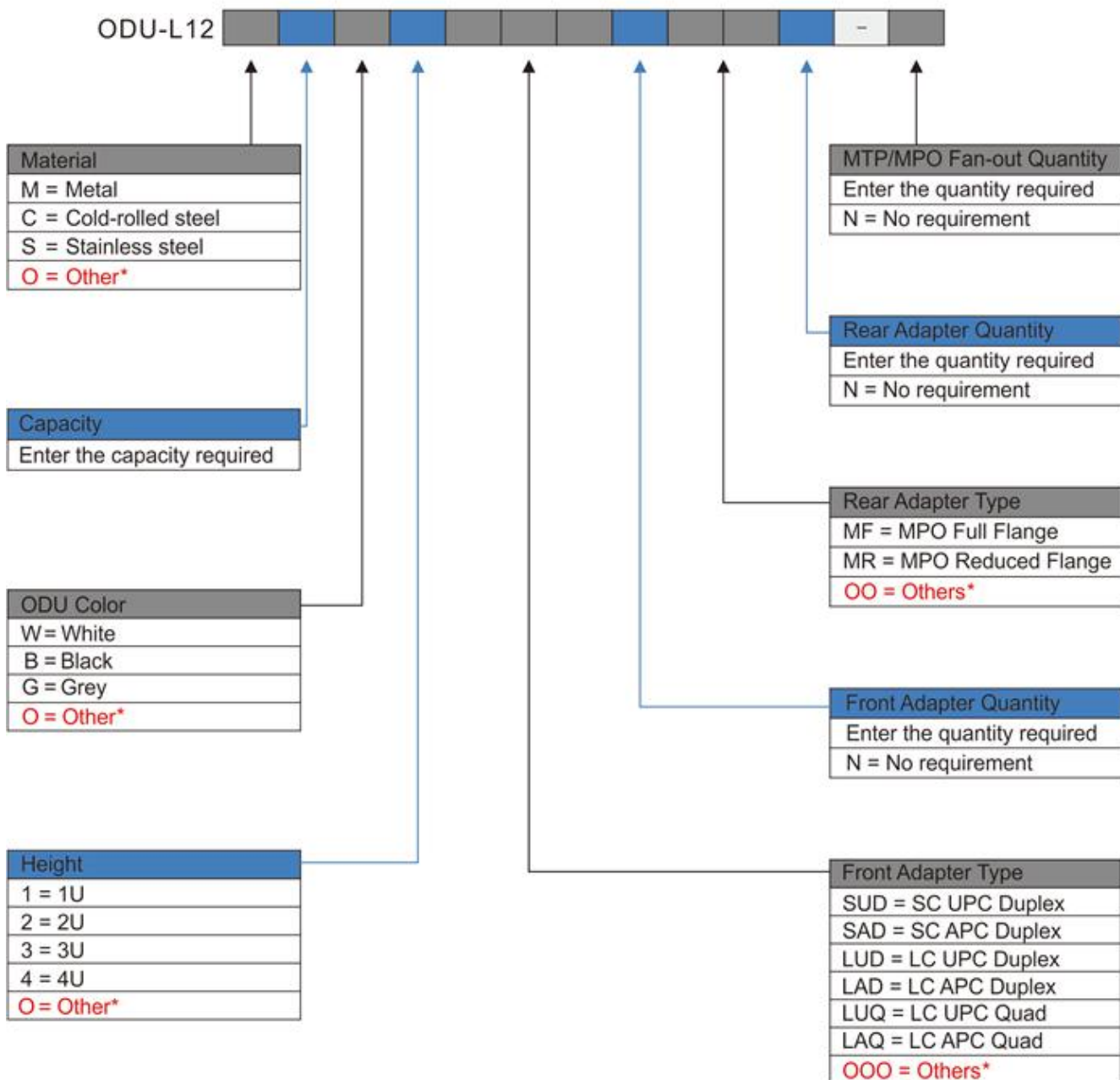
# Technical Drawings



## Part Details



# Catalog Number



## Ordering Example:

ODU-L12C96B1LUQ24MR12-12 Cold-rolled Steel, 96 cores, Black ODU, 1U, LC UPC Quad, 24 Front Adapters, MPO Reduced Flange, 12 Rear Adapters, 12 MTP/MPO Fan-out Cables.

**Note:** \*If the required type of any item is not on the relevant list, please use "O", "OO" or "OOO" as the red cells indicate, and kindly state the required type in the description of PO.



LongXing Telecom



Anju Road, Beilun District, Ningbo, China



info@lxtelecom.com



www.lxtelecom.com



LongXing Telecom



LongXingTelecom



+86 574 87908988



+86 574 87908188

Ver: 160616

**LONGXING**

Structured Cabling Solutions