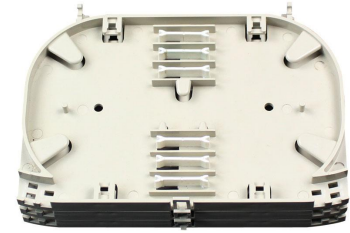


Splice Tray

ST-2D24F

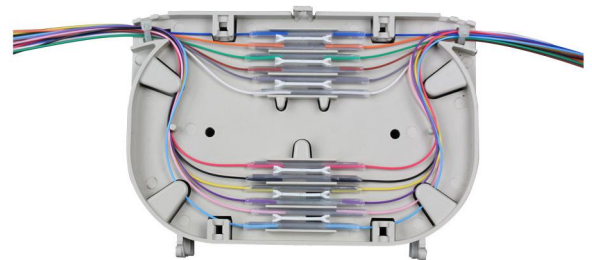
Overview

LongXing's injection molded plastic splice trays provide protection and slack management of heat shrink fusion spliced fibers (up to 12 or 24 fibers) inside of a fiber enclosure. Available in 12-fiber Mini and 24-fiber High Density versions, both trays accommodate 250 or 900 μ m fiber and feature a clear cover for viewing and inspection of tray contents. Splice tray is used in optical distribution frame, distribution box, and splice closures, which is engineered for use with indoor or outdoor splice hardware with both loose tube and tight-buffered optical cable designs.



Features

- ABS material used ensures the body strong and light
- The fusing distribution board of the unit box is double layer structure, integrating the fusing and distribution into one unity.
- Max 24-fiber high-density splice trays per unit
- Protect and manage heat shrink style spliced fibers
- Heat shrink splice holder and sleeves included
- Clear cover allows viewing or inspection of fibers without having to remove cover
- Use for single-mode or multimode fiber
- Durable injection-molded plastic trays and covers
- Longer bending radius for fiber, Easy operation of pigtails
- Easily disposed for particular needs
- Suitable for ribbon or non-ribbon optical fiber cable



Dimensions and Capability	
Dimensions (W*H*D)	150mm*110mm*10mm per unit
Capacity	24 cores per unit
Optional Accessories	Heat Shrink Tubes, Heat Shrink Splice Holder
Max diameter of entry cable	7.0mm
Weight	0.10 KG per unit



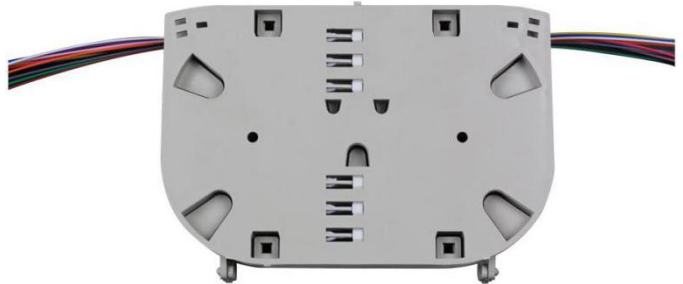
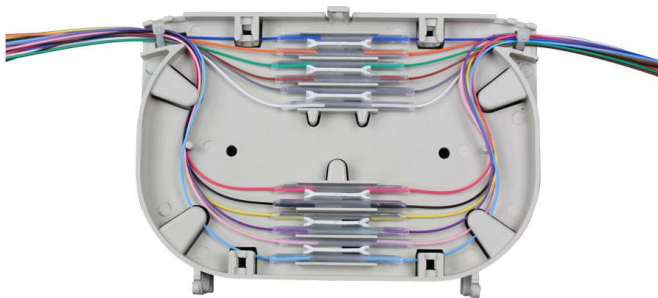
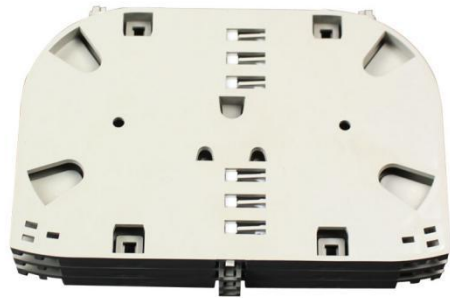
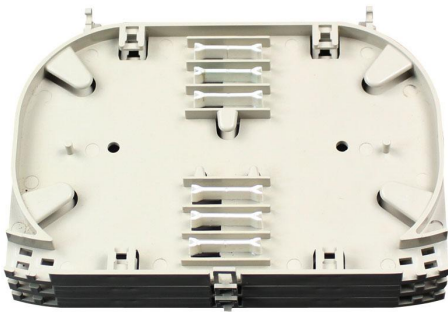
Operation Conditions

Temperature	-40°C -- 55°C
Sealing performance	Remain unchanged for 72 hours on pressure 70kpa
Air Pressure	70kPa – 106kPa
Tensile Strength	>1000N
Compressive Strength	Withstand 2000N/10Cm ² in 1min

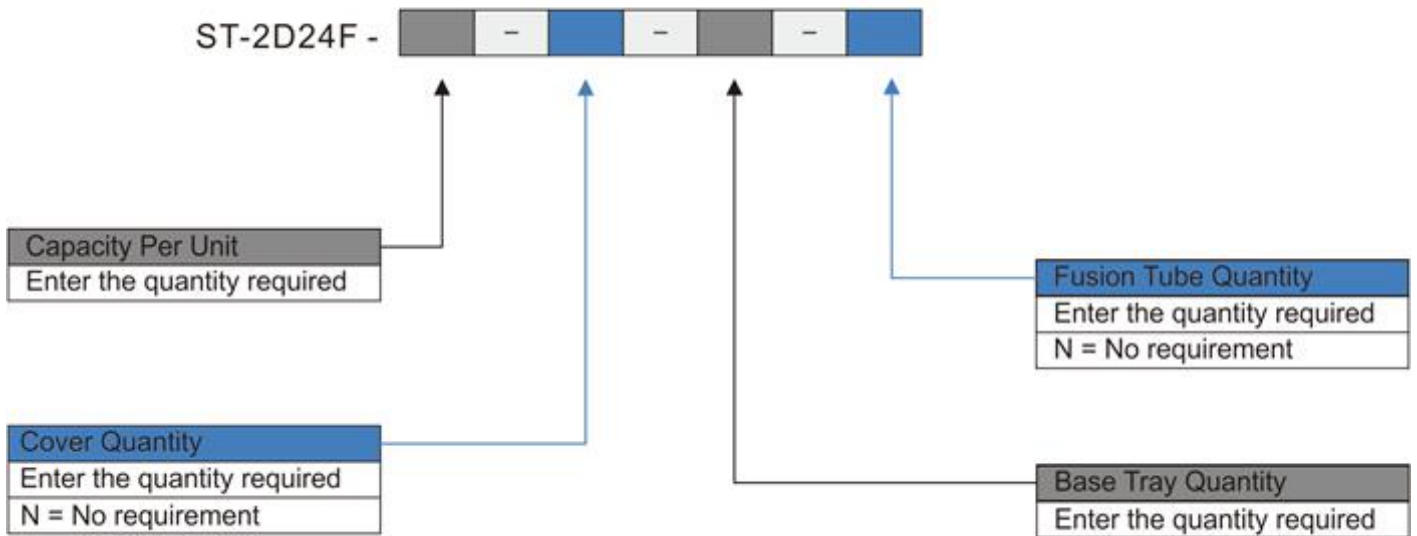
Shipping Information

Package Contents	Splice Tray Base with Splice Holder; Splice Tray Cover
Package Dimensions(W*H*D)	200mm*150mm*60mm per unit
Material	Carton box
Weight	0.65 KG per unit
Lead Time	10-15 working days normally

Part Details



Catalog Number



Ordering Example:

ST-2D24F-48-2-2-48 48 Cores, 2 Cover, 2 Base tray, 48 Fusion tubes

Note: *Cable diameter is 0.9mm.

If the required type of any item is not on the relevant list, please use "O" or "OO" as the red cells indicate, and kindly state the required type in the description of PO.