

Splice Tray

ST-2D24C

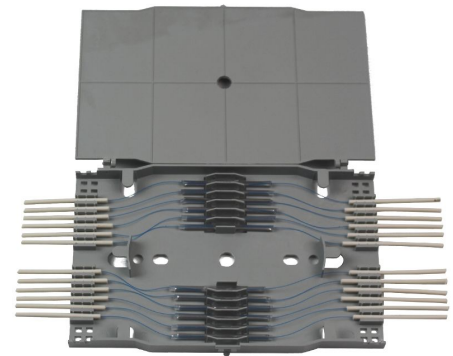
Overview

Splice tray is used in optical distribution frame, distribution box, and splice closures, which is engineered for use with indoor or outdoor splice hardware with both loose tube and tight-buffered optical cable designs. The compact splice cassettes designed for simple, cost effective low and mid-sized fiber splicing applications. Each cassette is supplied with splice holders that secure and protect both fusion and mechanical splices; also the top cover is included.



Features

- ABS material used ensures the body strong and light
- The fusing distribution board of the unit box is double layer structure, integrating the fusing and distribution into one unity.
- 24-fiber high-density splice trays
- Protect and manage heat shrink style spliced fibers
- Heat shrink splice holder and sleeves included
- Clear cover allows viewing or inspection of fibers without having to remove cover
- Use for single-mode or multimode fiber
- Durable injection-molded plastic trays and covers
- Longer bending radius for fiber, Easy operation of pigtails
- Easily disposed for particular needs
- Suitable for ribbon or non-ribbon optical fiber cable



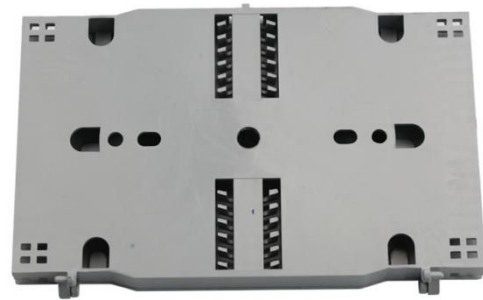
Dimensions and Capability	
Dimensions (W*H*D)	157mm*105mm*15mm per unit
Capacity	24 cores per unit
Optional Accessories	Heat Shrink Tubes, Heat Shrink Splice Holder
Max diameter of entry cable	3.0mm
Weight	0.067 KG per unit



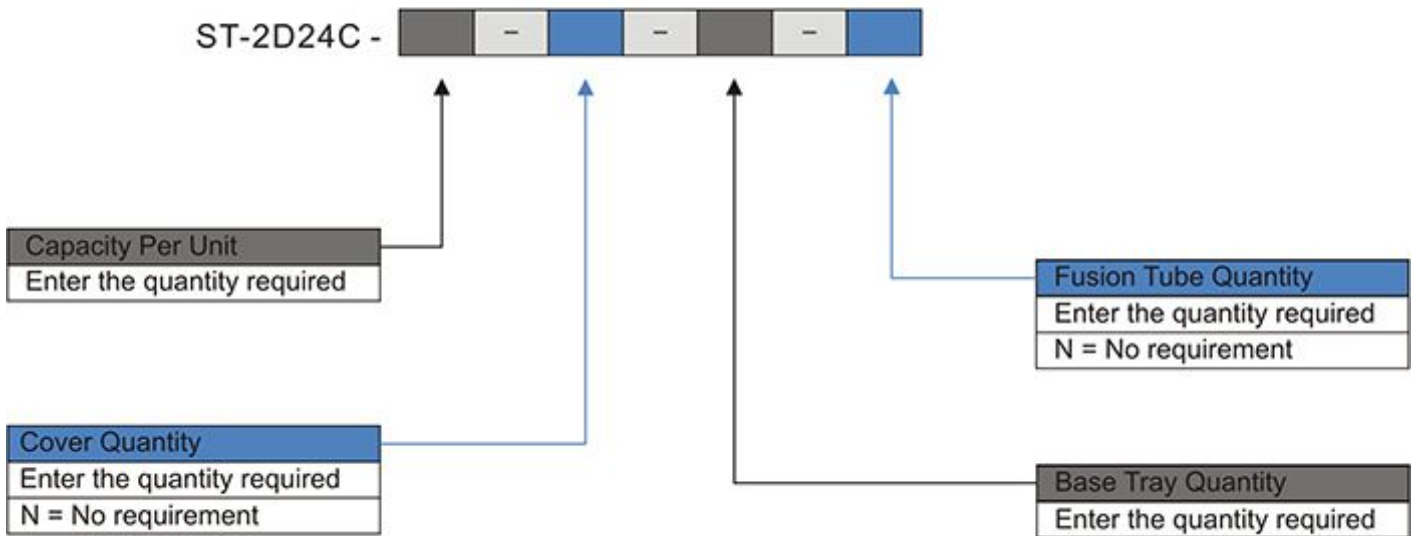
Operation Conditions	
Temperature	-40°C -- 55°C
Sealing performance	Remain unchanged for 72 hours on pressure 70kpa
Air Pressure	70kPa – 106kPa
Tensile Strength	>1000N
Compressive Strength	Withstand 2000N/10Cm ² in 1min

Shipping Information	
Package Contents	Splice Tray Base with Splice Holder; Splice Tray Cover
Package Dimensions(W*H*D)	200mm*150mm*65mm per unit
Material	Carton box
Weight	0.5 KG per unit
Lead Time	10-15 working days normally

Part Details



Catalog Number



Ordering Example:

ST-2D24C-48-1-2-48 48 cores, 1 cover, 2 base tray, 48 fusion tubes

Note: *Cable diameter is 0.9mm.

If the required type of any item is not on the relevant list, please use "O" or "OO" as the red cells indicate, and kindly state the required type in the description of PO.

